

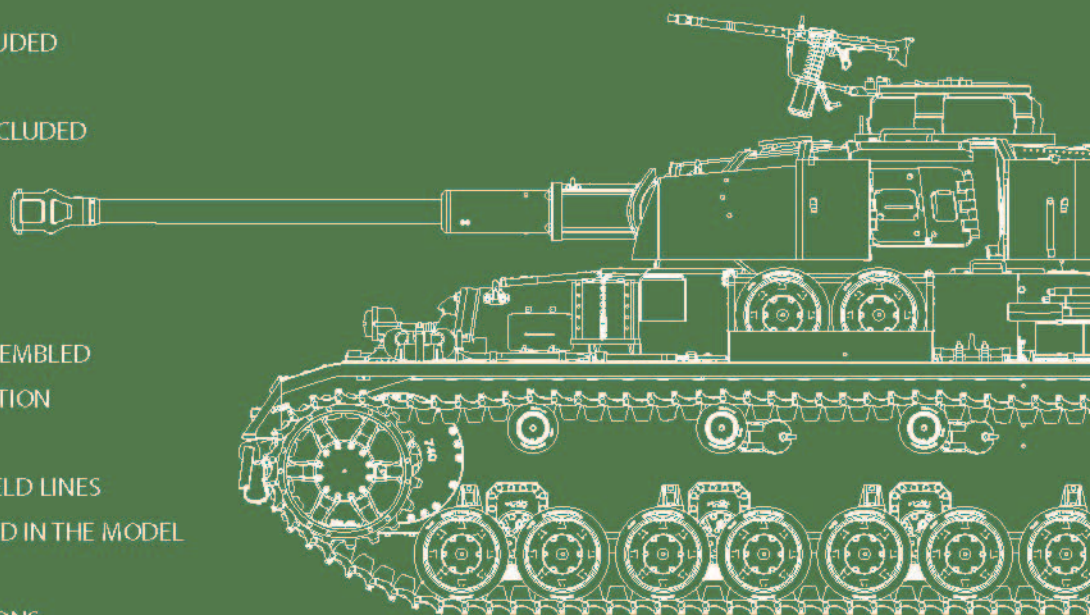
# BULGARIAN MAYBACH T-IV H

35328



## GENERAL INSTRUCTION

- HIGHLY DETAILED PLASTIC MODEL KIT
- WORKABLE TRACKS INCLUDED
- PHOTO-ETCHED PARTS INCLUDED
- CLEAR PLASTIC PARTS INCLUDED
- ALL HATCHES CAN BE ASSEMBLED IN OPEN OR CLOSED POSITION
- METAL SURFACES AND WELD LINES ACCURATELY REPRESENTED IN THE MODEL
- DECAL SHEET FOR 8 OPTIONS



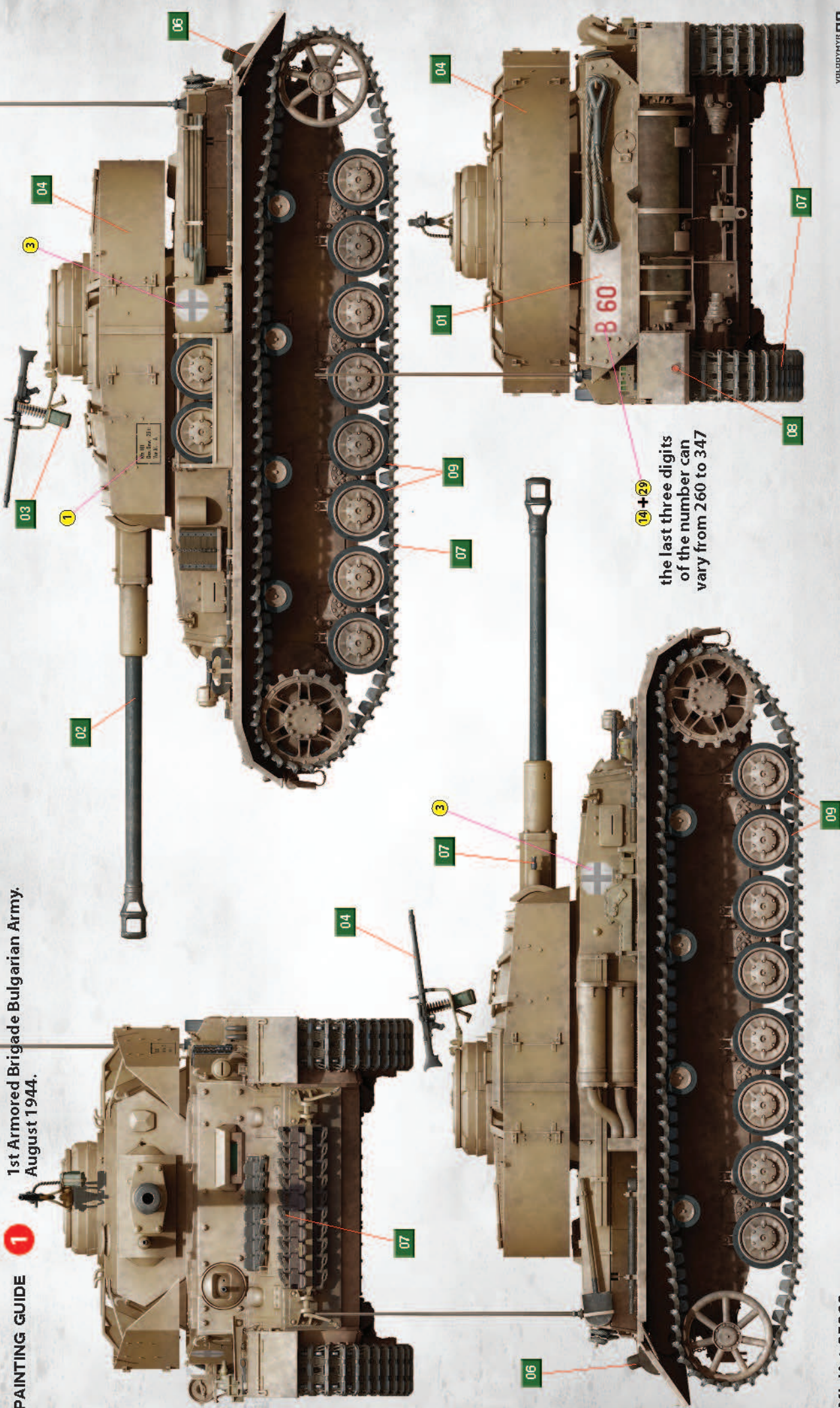
SCALE  
**1:35**



**PAINTING GUIDE**

**1**

1st Armored Brigade Bulgarian Army.  
August 1944.

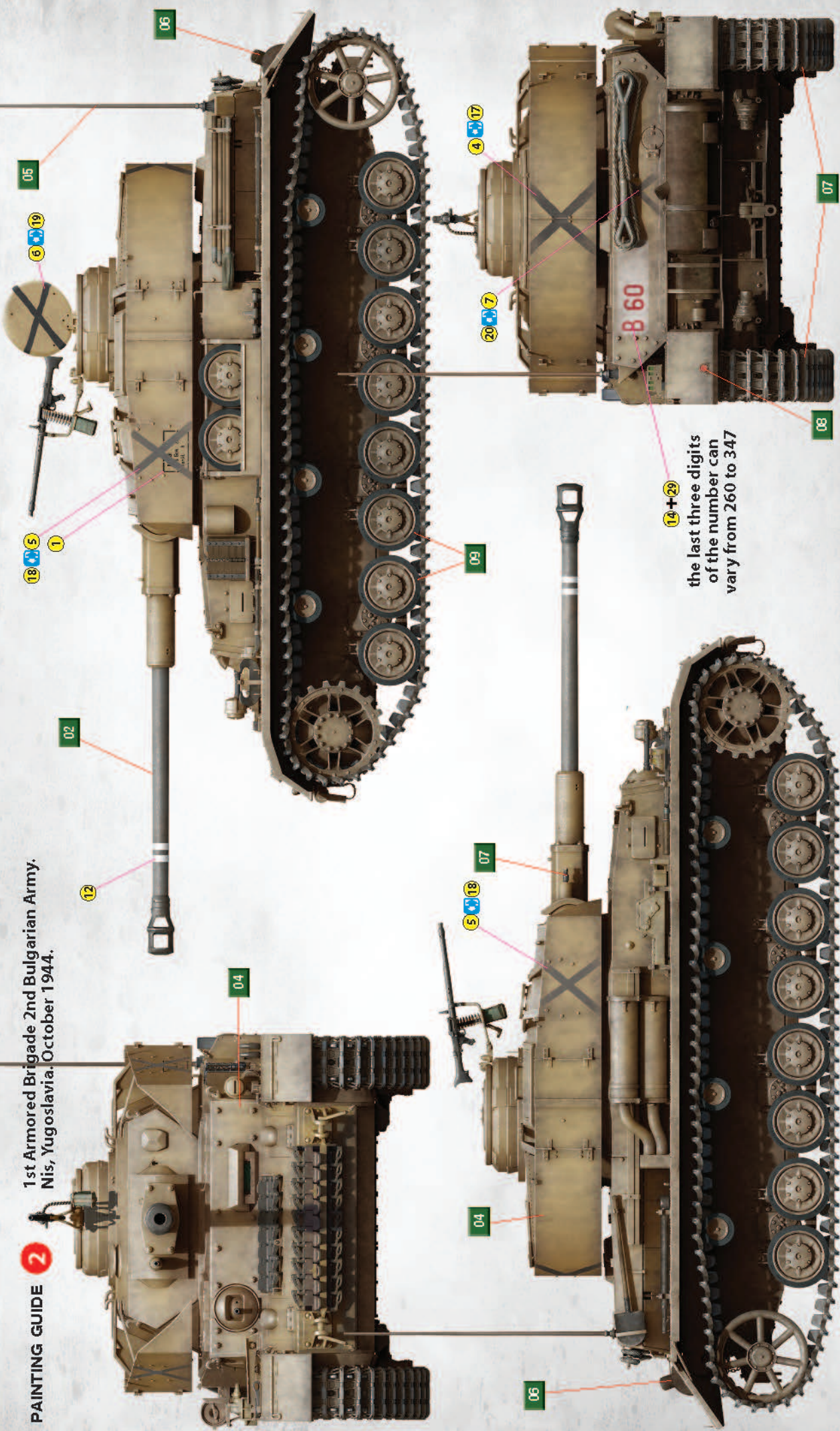


the last three digits of the number can vary from 260 to 347



**PAINTING GUIDE 2**

1st Armored Brigade 2nd Bulgarian Army.  
Nis, Yugoslavia. October 1944.



the last three digits of the number can vary from 260 to 347







**ATTENTION**

Ne pas utiliser de colle ou de peinture à proximité d'une flamme nue, et aérer la pièce de temps en temps.  
 Pour retirer les pièces hors du cadre, utiliser des ciseaux spéciaux pour maquette le plastique en excès avec un cutter ou une lime.  
 Voir la fin de cette colonne pour la signification des symboles.  
 Après l'assemblage peut rester des pièces inutilisées.

**ZUR BEACHTUNG**

Kleber und Farbe nicht nahe von offenem Feuer verwenden und das Fenster von Zeit zu Zeit zur Belüftung öffnen.  
 Zum Abschneiden der Teile vom Verbundstück eine Modellierschere verwenden und die überstehenden Plastikteile mit einem Messer oder einer Feile beseitigen.  
 Die Bedeutung der Symbols finden Sie unten in dieser Spalte.  
 Nach dem Zusammenbau des Modells, können einzelne Teile übrig bleiben

**УВАГА**

При використанні клею та фарб всі роботи проводити подалі від джерел вогню у приміщенні, що добре провітрюється.  
 Деталі відокремлювати від літників ножем або іншим ріжучим інструментом. Зачистити облік і місце срезу при допомозі надфайлу та наждачного паперу. Вудування моделі виконувати акуратно зі скоткою. Для зручності побудови кожна деталь позначена номером.  
 Після складання можуть залишитися невикористані деталі.

**ATTENZIONE**

Non usare colla e vernice vicino a fiamme esposte, e aprire le finestre di tanto in tanto per cambiare l'aria. Quando si staccano parti del carello, usare forbici da modellismo e eliminare la plastica in eccesso con un coltello o una lima. Vedere in fondo a questa colonna per il signifi. Dopo l'assemblaggio possono rimanere parti inutilizzate.

**ВНИМАНИЕ**

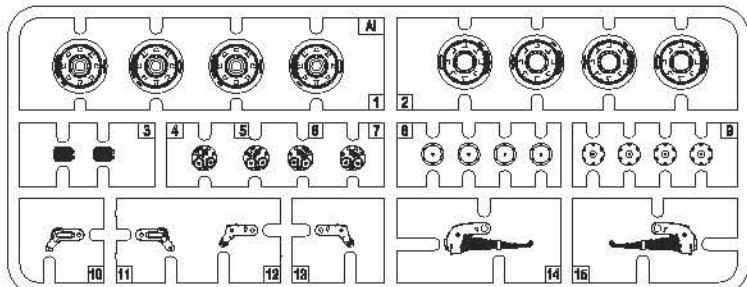
При использовании клея и красок все работы производить в проветриваемом помещении вдали от источников огня. Детали отделить от литников ножом или другим режущим инструментом. Зачистить облик и места среза при помощи надфили и наждачной бумаги. Сборку моделей производить согласно схеме сборки.  
 Для удобства сборки каждая деталь обозначена номером. После сборки набора могут остаться неиспользованные детали.

**CAUTION**

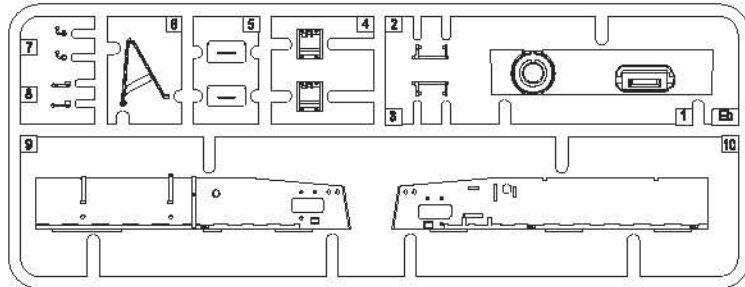
When you use glue or paint, do not use near open flame, and use in well ventilated room. When you take parts off from the runner frame, use modeling scissors or cutter.  
 See the bottom of this column for the meaning of symbols.  
 Extra details can remain after assembling of the kit.

**PARTS**

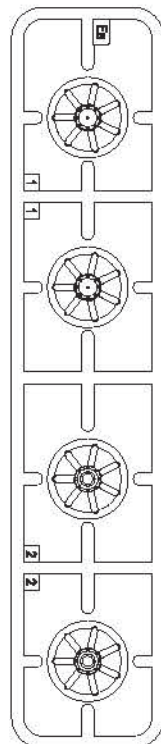
**Ai x4**



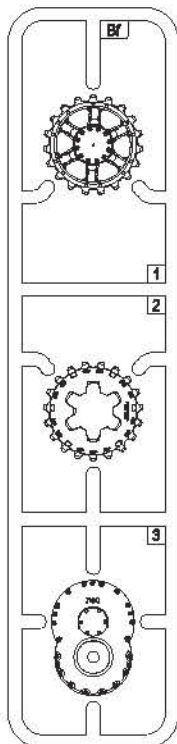
**Eb**



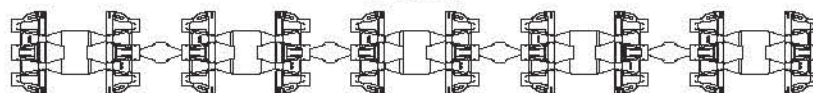
**Ea**



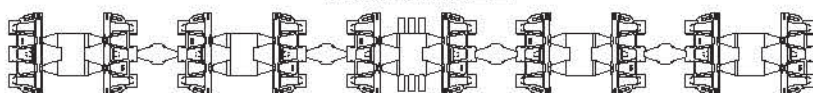
**Bf x2**



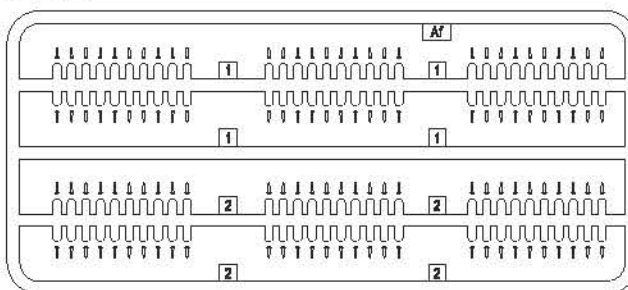
**Track I**



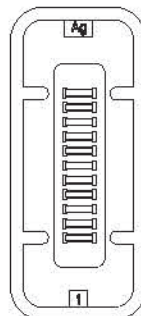
**Track III x22**



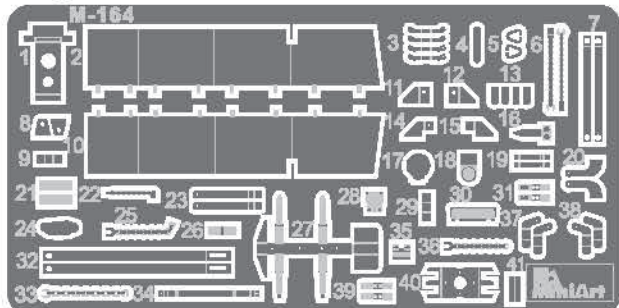
**Af x4**



**Ag**



**PE parts**



**Decal**



**COLOR CHART**

| Nº | Vallejo | Mr. Color | AK RC  | Mission Models | AMMO MIG    | Tamiya | Color name        |
|----|---------|-----------|--------|----------------|-------------|--------|-------------------|
| 01 | 71.001  | C-062     | RC-004 | MMP-001        | A. MIG-0050 | XF-02  | White             |
| 02 | 71.056  | C-040     | RC-057 | MMP-014        | A. MIG-0008 | XF-63  | Dunkelgrau        |
| 03 | 71.007  | C-038     | RC-023 | MMP-025        | A. MIG-0081 | XF-62  | Olive Green       |
| 04 | 71.025  | C-039     | RC-062 | MMP-011        | A. MIG-0010 | XF-60  | Dunkelgelb        |
| 05 | 71.072  | C-028     | AK-476 | MMM-002        | A. MIG-0191 | XF-56  | Steel             |
| 06 | 71.069  | C-131     | AK-709 | MMW-001        | A. MIG-0041 | XF-10  | Rust              |
| 07 | 71.073  | C-078     | RC-015 | MMM-001        | A. MIG-0045 | XF-84  | Gun Metal         |
| 08 | 71.003  | C-003     | RC-006 | MMP-003        | A. MIG-0049 | XF-07  | Red               |
| 09 | 71.251  | C-137     | RC-022 | MMP-040        | A. MIG-0033 | XF-85  | Tire Black        |
| 10 | 71.017  | C-511     | RC-073 | MMP-031        | A. MIG-0019 | XF-62  | 4BO Russian Green |





MAKE 2x2  
2 TEILE FERTIGEN  
EFFECTUER 2 PIÈCES  
FAIRE DUE PEZZI  
TEE 2 KPL  
COOK 2 ST  
ПОВТОРИТЬ ДВА РАЗА  
ИШЬКОСТЬ РАБВ



DO NOT CEMENT  
NICHT KLEBEN  
NE PAS COLLER  
NON INCOLLARE  
ESILIMMA  
LIMAKESJ  
НЕ ИСПОЛЬЗОВАТЬ КЛЕЙ  
НЕ КЛЕИТИ



OPTIONAL  
NACH BELIEBEN  
FACILITATIF  
FACILITATIVO  
VALINNANVARAINEN  
VALIBAR  
ВАРИАНТЫ  
ВАРИАНТИ



OPEN HOLE  
OFFEN  
FAIRE UN TROU  
PORO APERTO  
AVALA RESKA  
ОТВРА НАЛЕТ  
СДЕЛАТЬ ОТВЕРСТИЕ  
ЗРОБИТИ ОТВР



REMOVE  
ENTFERNEN  
RETRER  
SEPARARE  
POSTA  
AVLADINA  
ОТРЕЗАТЬ  
ВЫПРАТИ



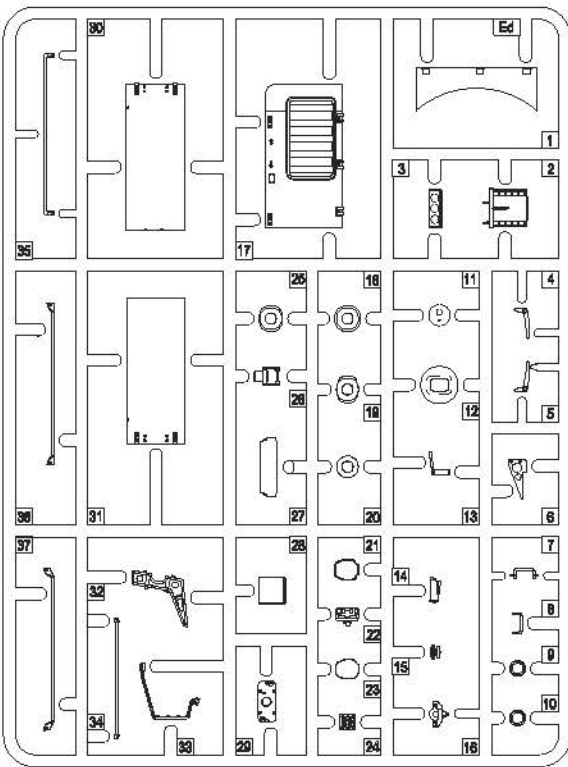
BEND  
BITTE BIEGEN  
PLIER S'IL VOUS PLAIT  
PIEGARE  
DATA  
BOGKA  
ВЫГНУТЬ  
ВМТНУТИ



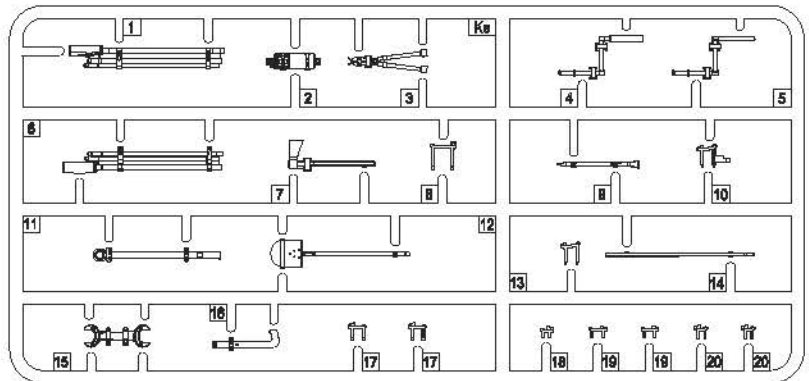
SCRATCH/BUILD  
AM MENSTEN ZU MACHEN  
FAIRE LE PLUS  
RENDITI  
TEE ITSE  
COOK DIB BUALV  
СДЕЛАТЬ САМОМУ  
ЗРОБИТИ САМОМУ

## PARTS

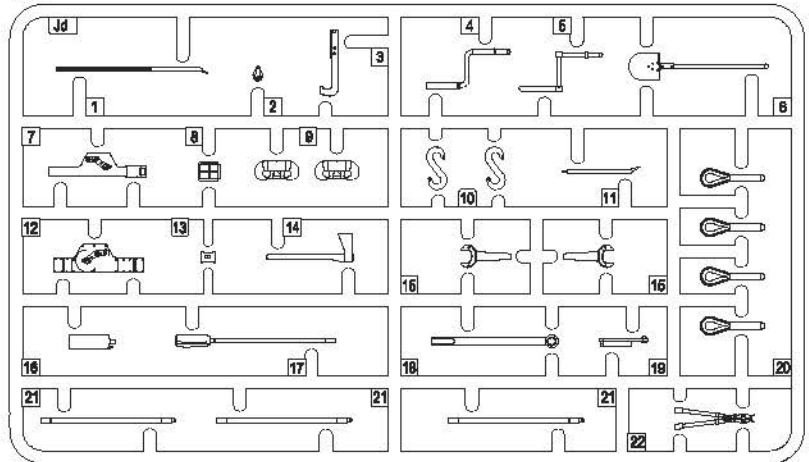
Ed



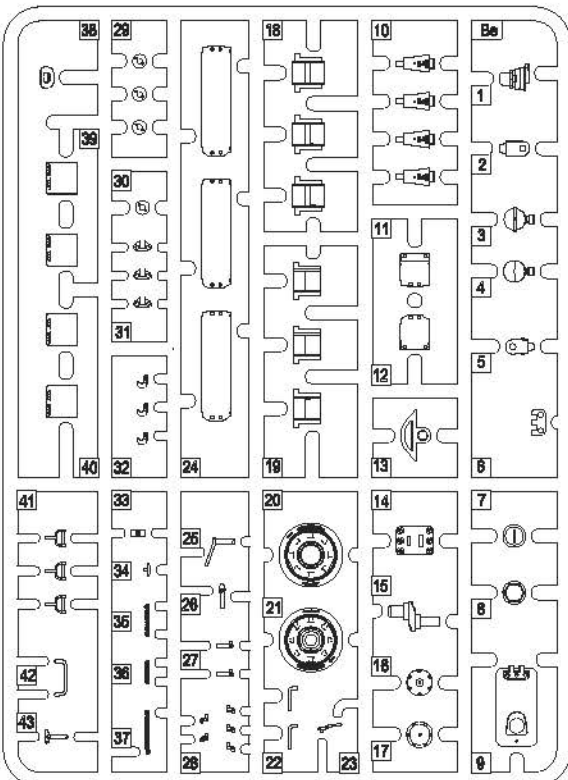
Ke



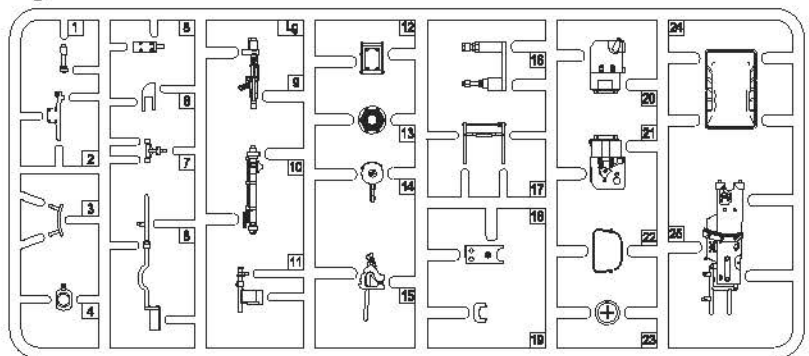
Jd



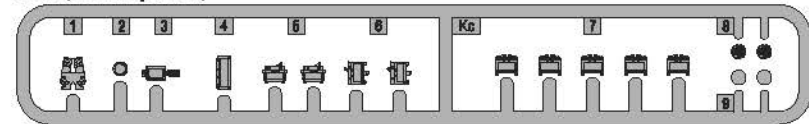
Be x2



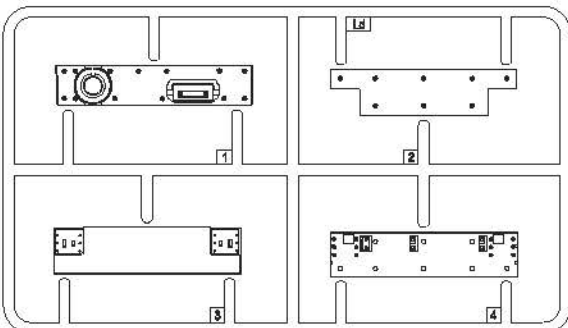
Lg



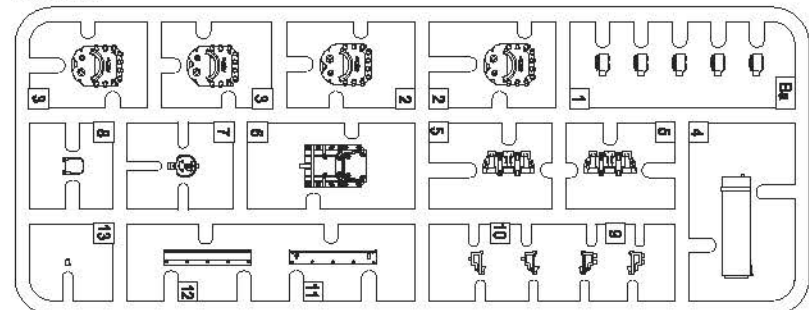
Kc (Clear parts)



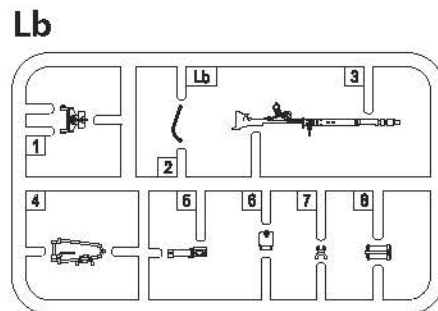
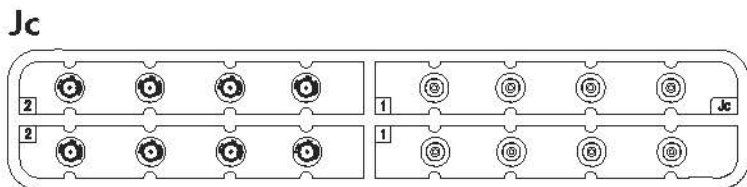
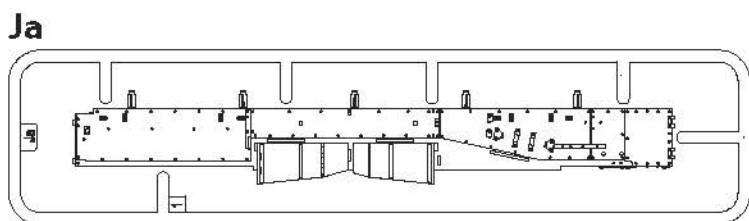
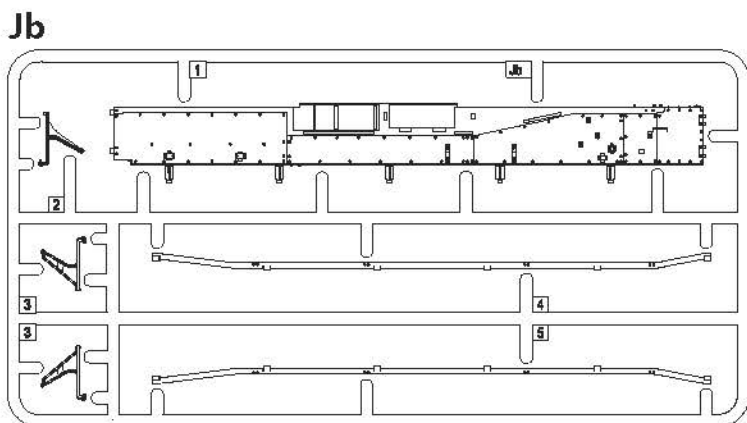
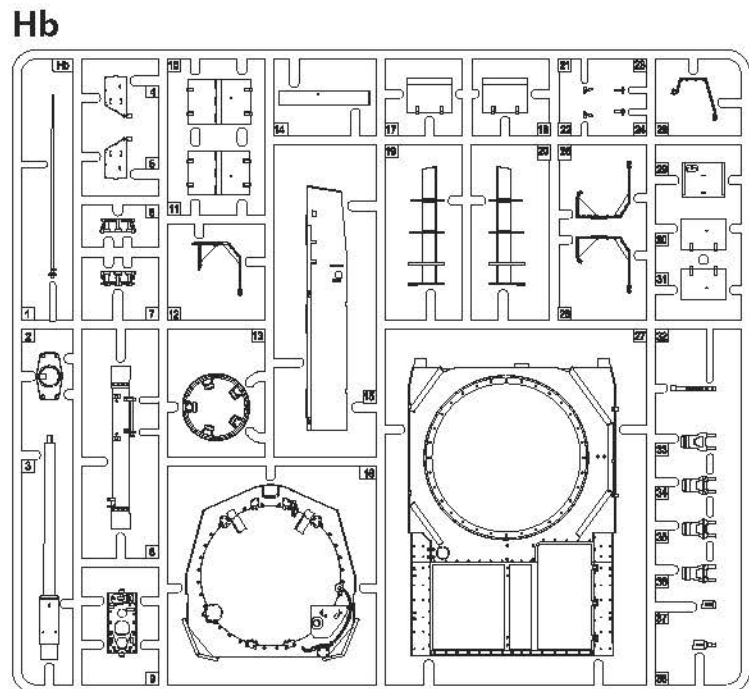
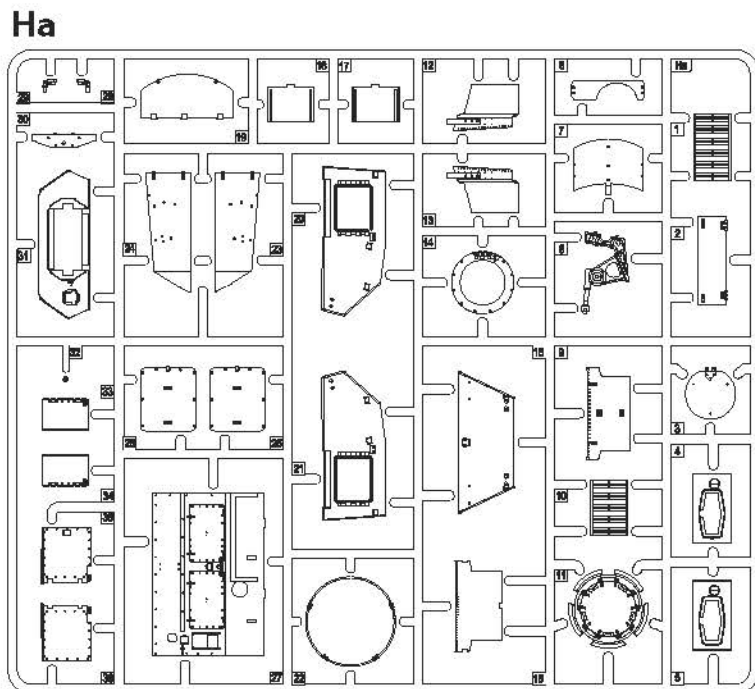
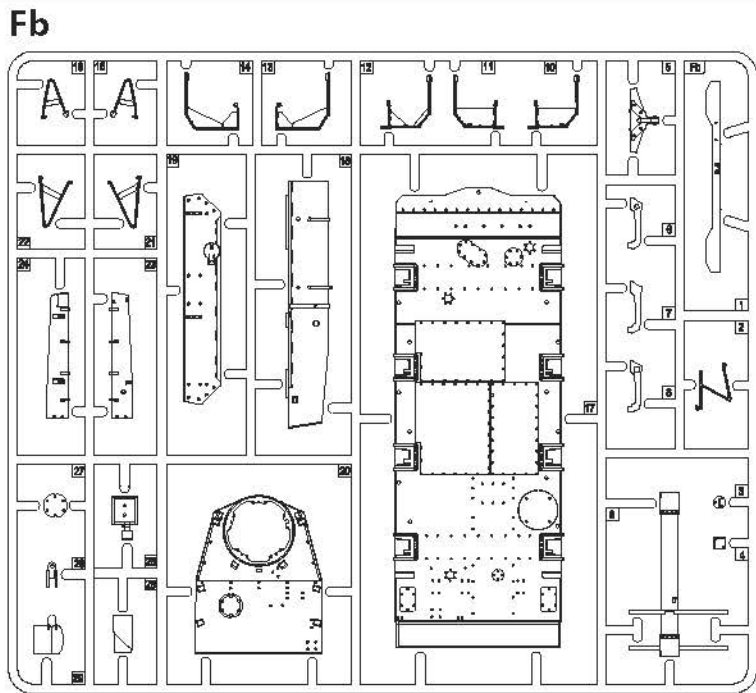
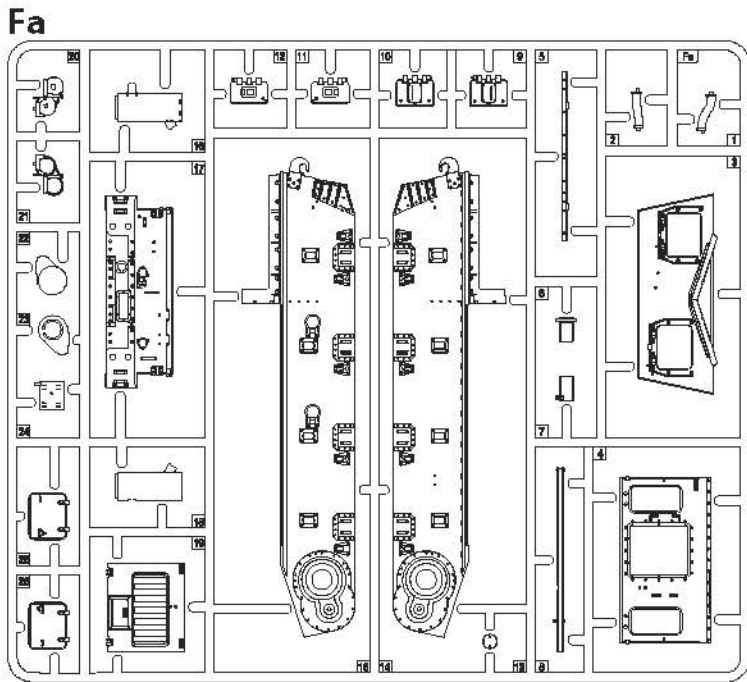
Ld



Bax2

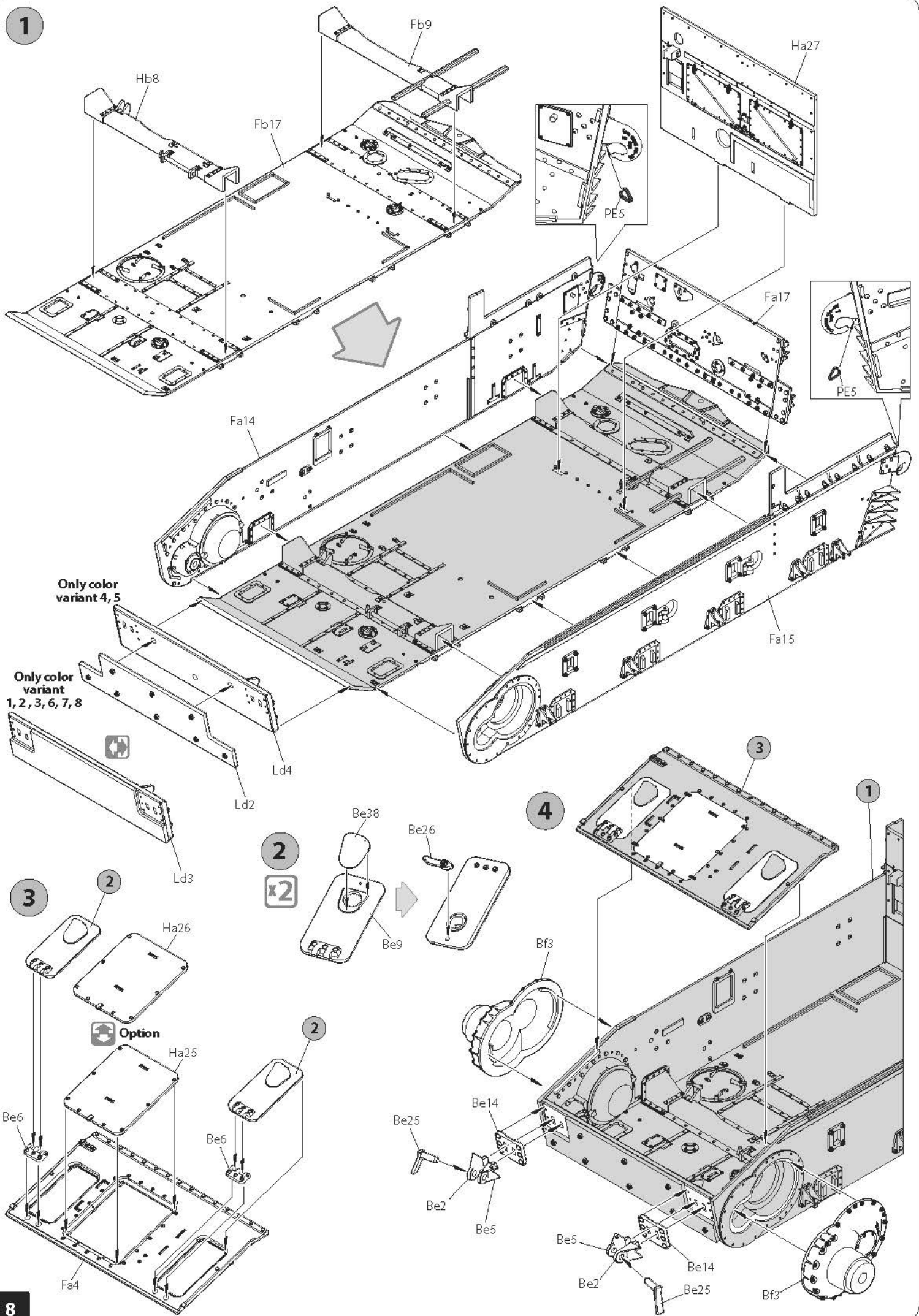








1



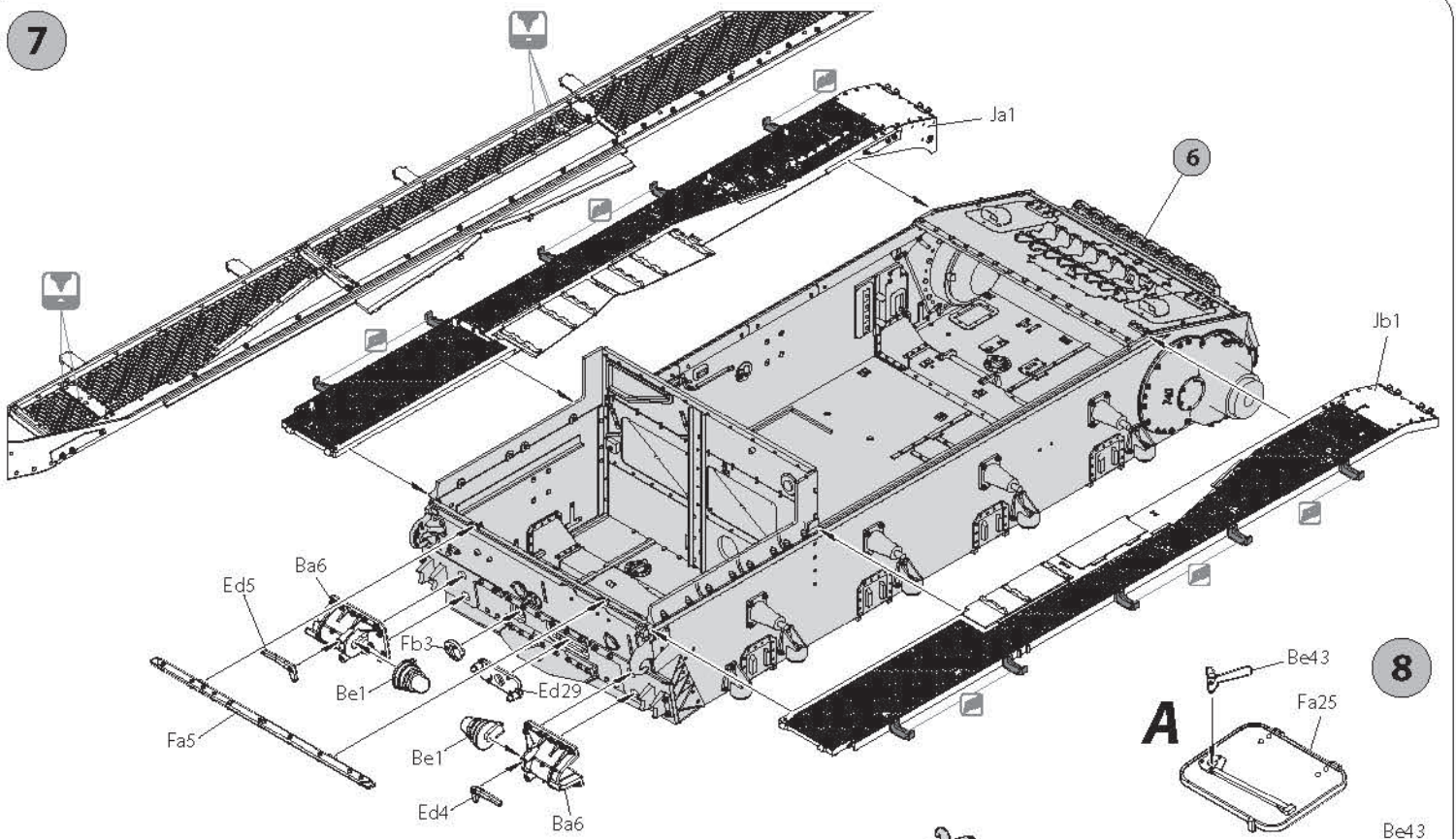
8



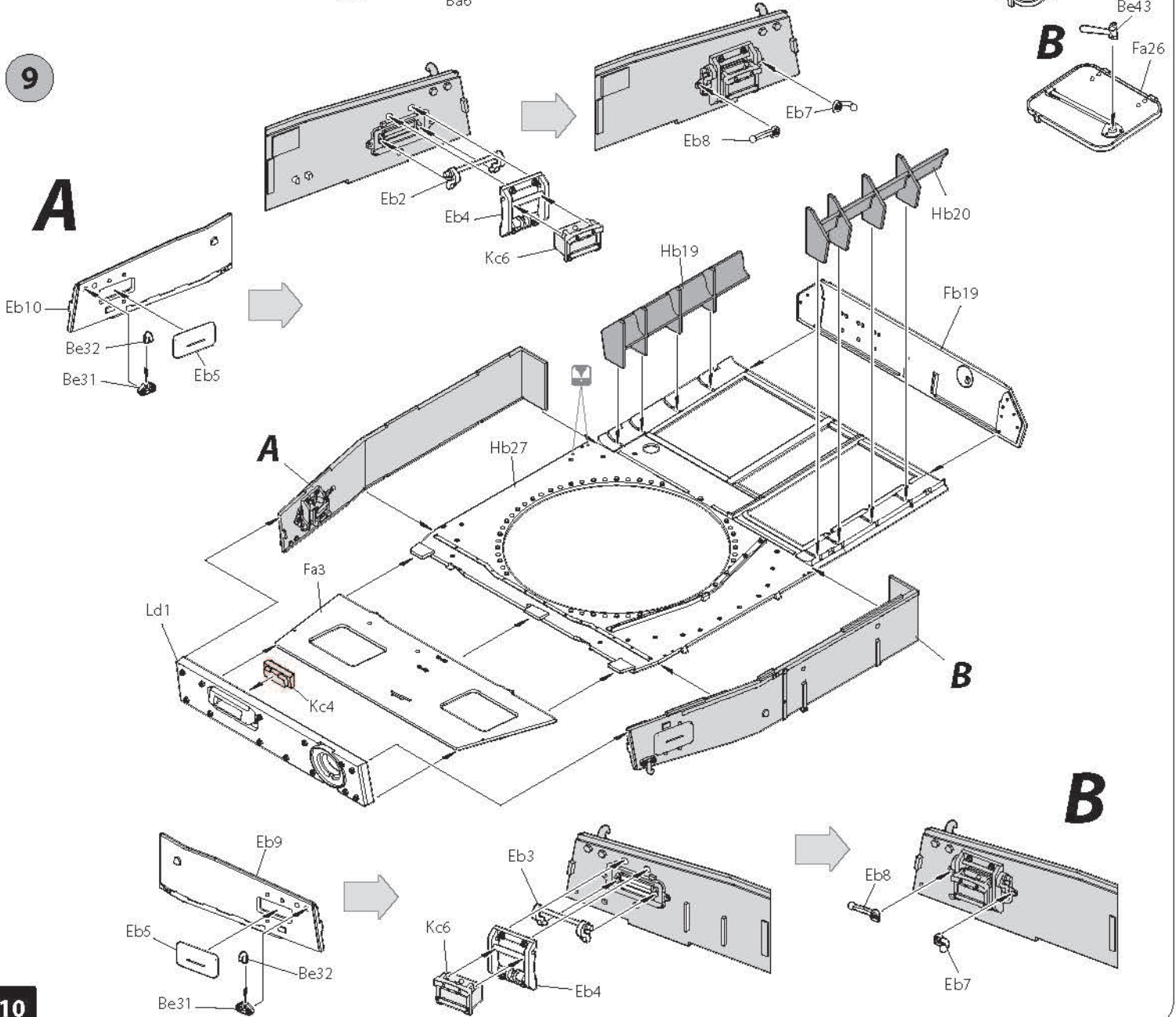




7



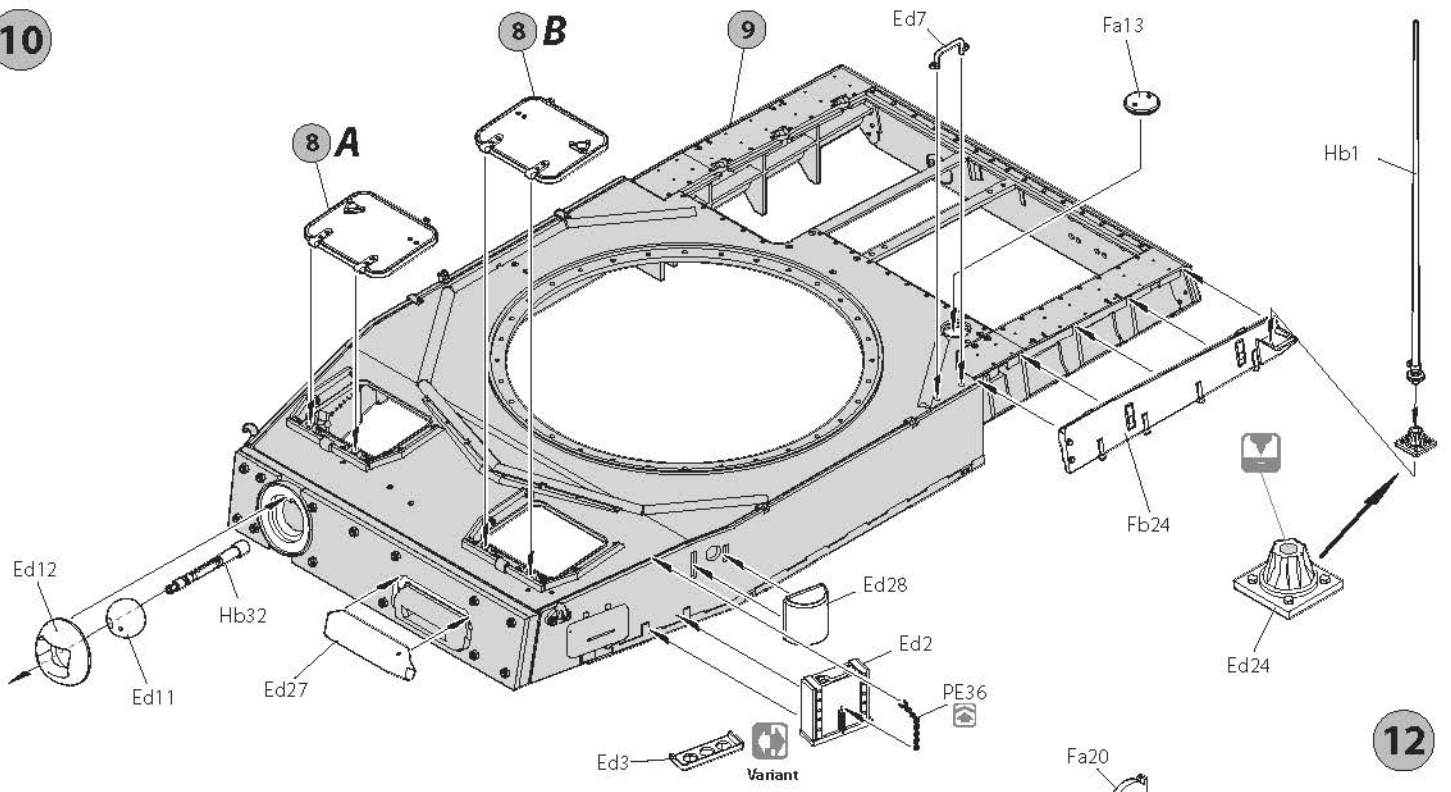
9



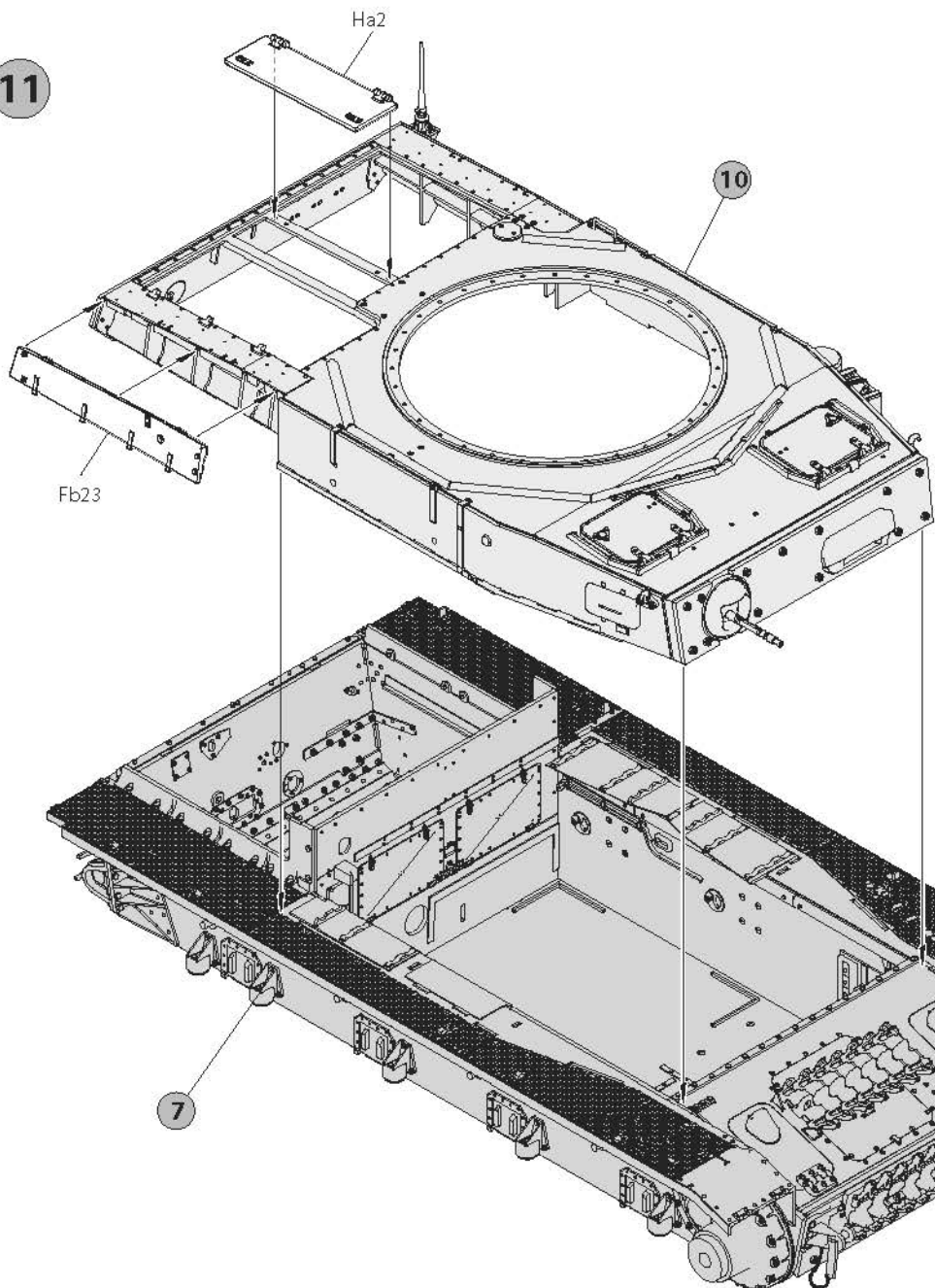
10



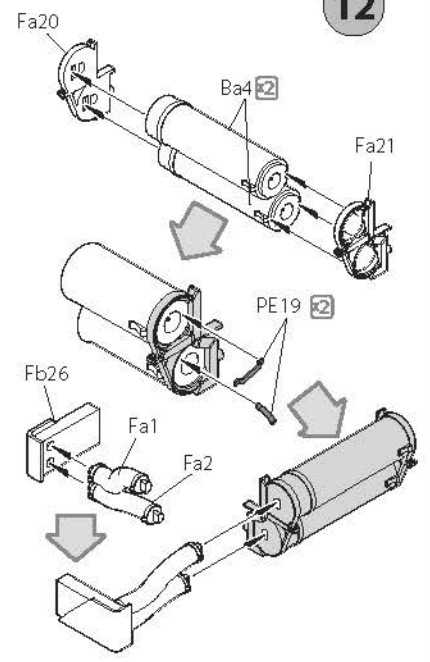
10



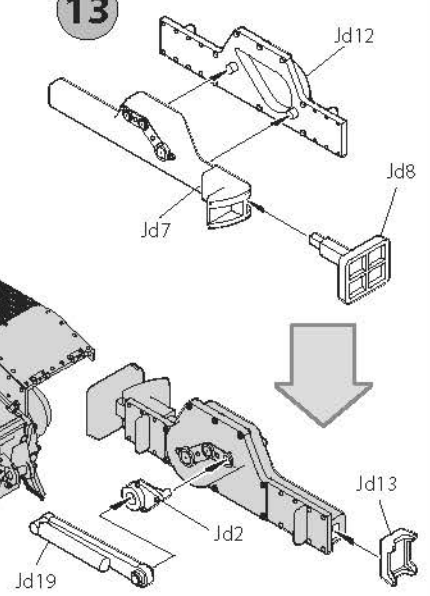
11



12

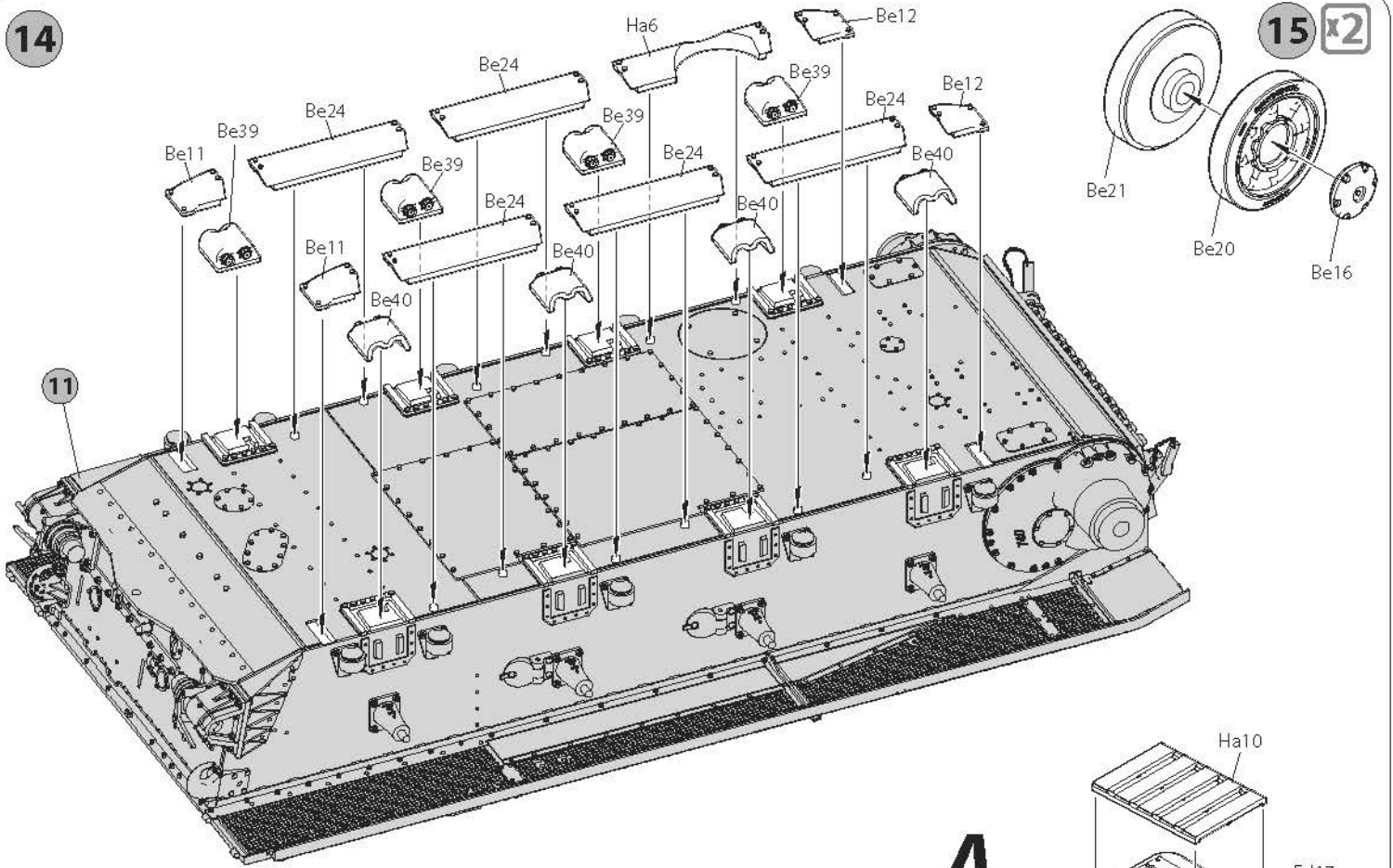


13





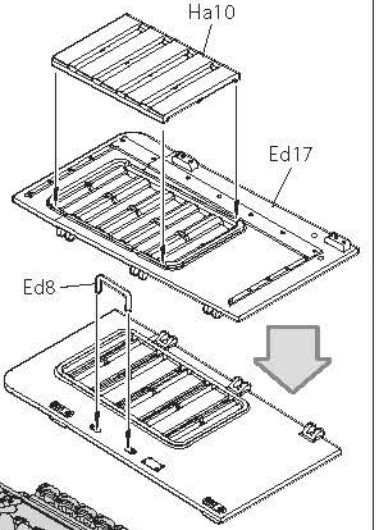
14



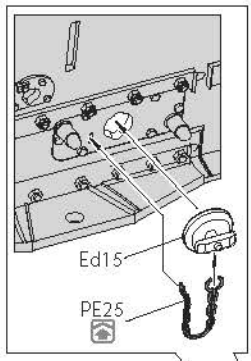
15 x2

11

A



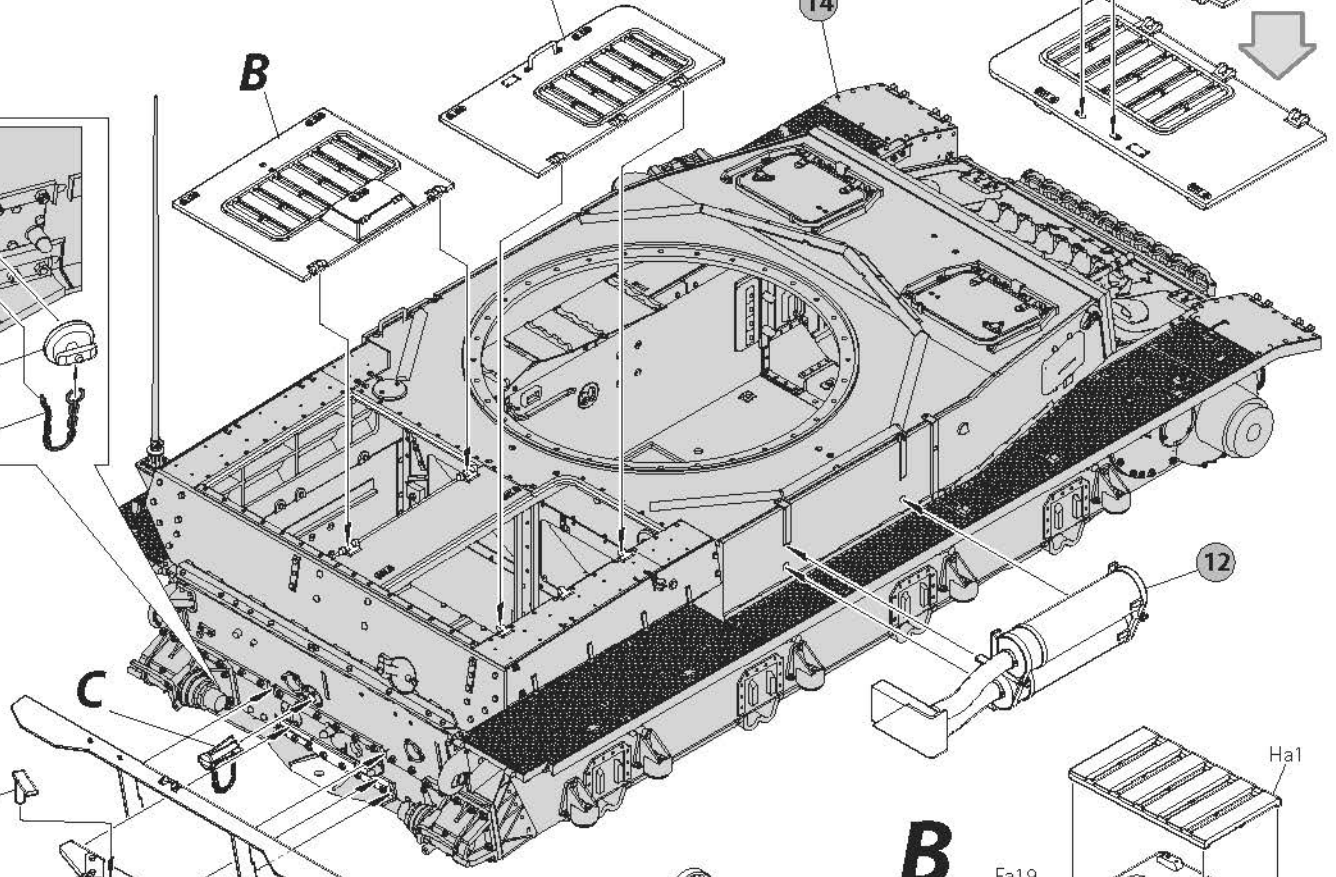
16



A

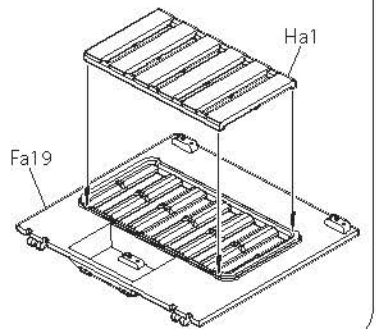
B

14



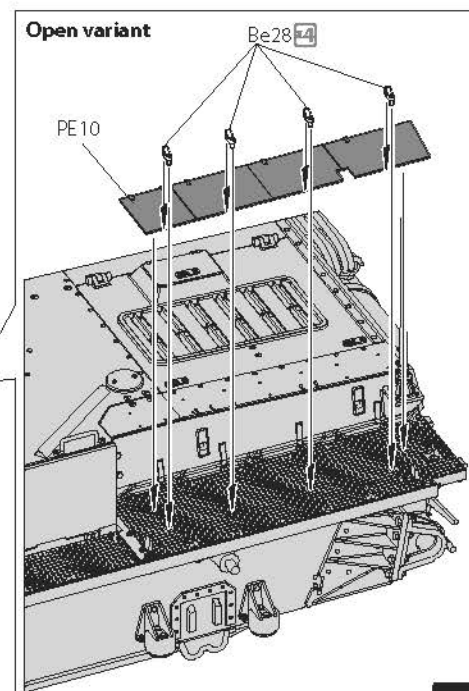
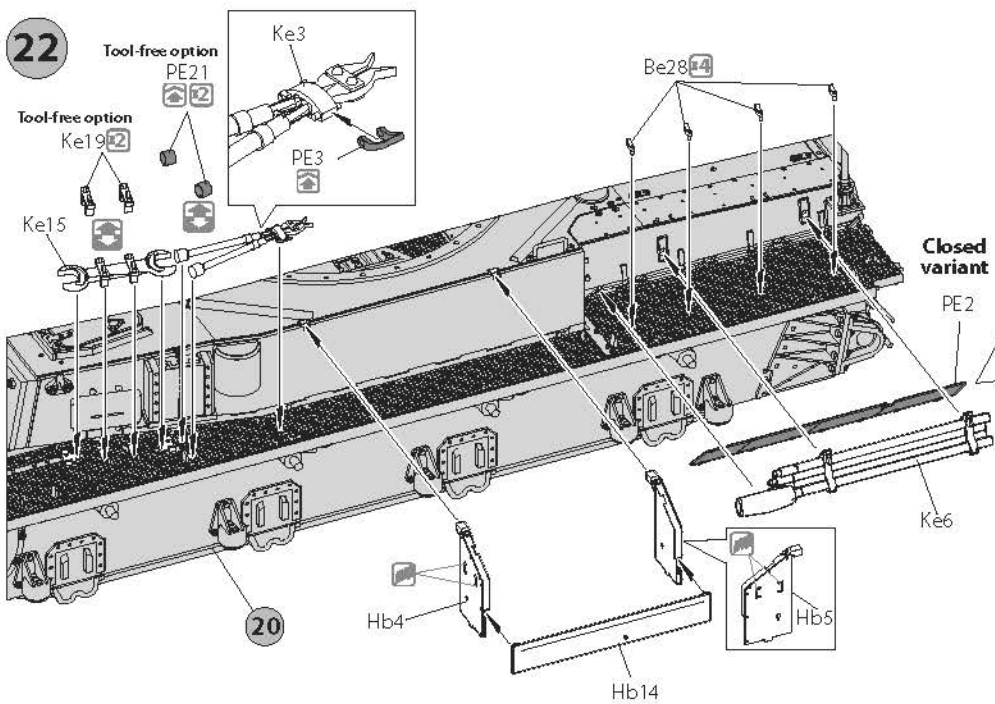
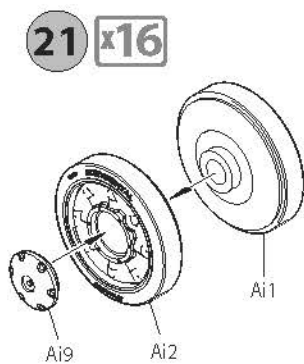
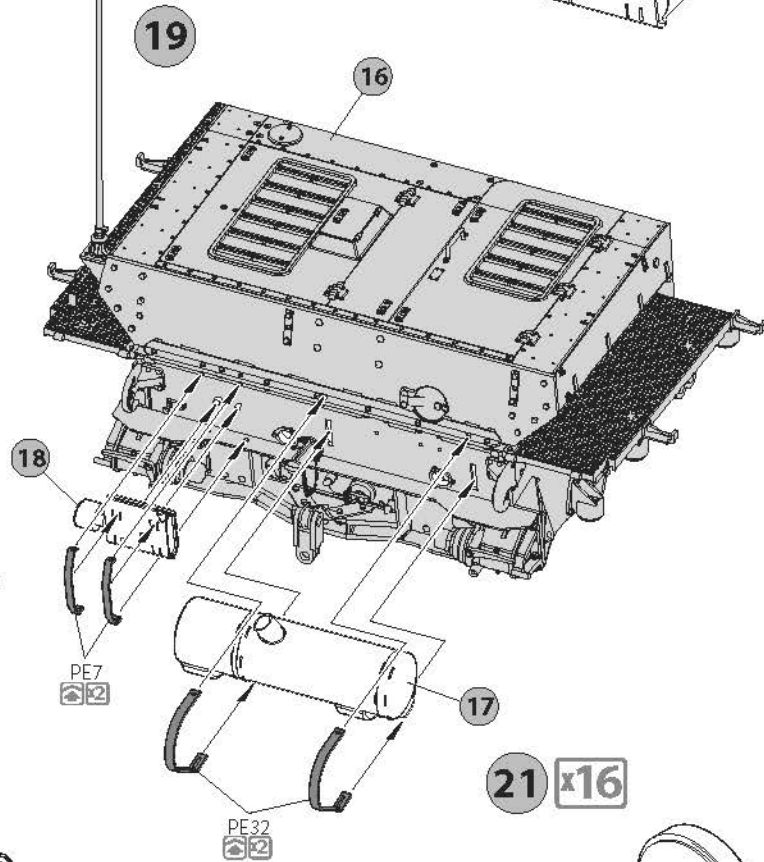
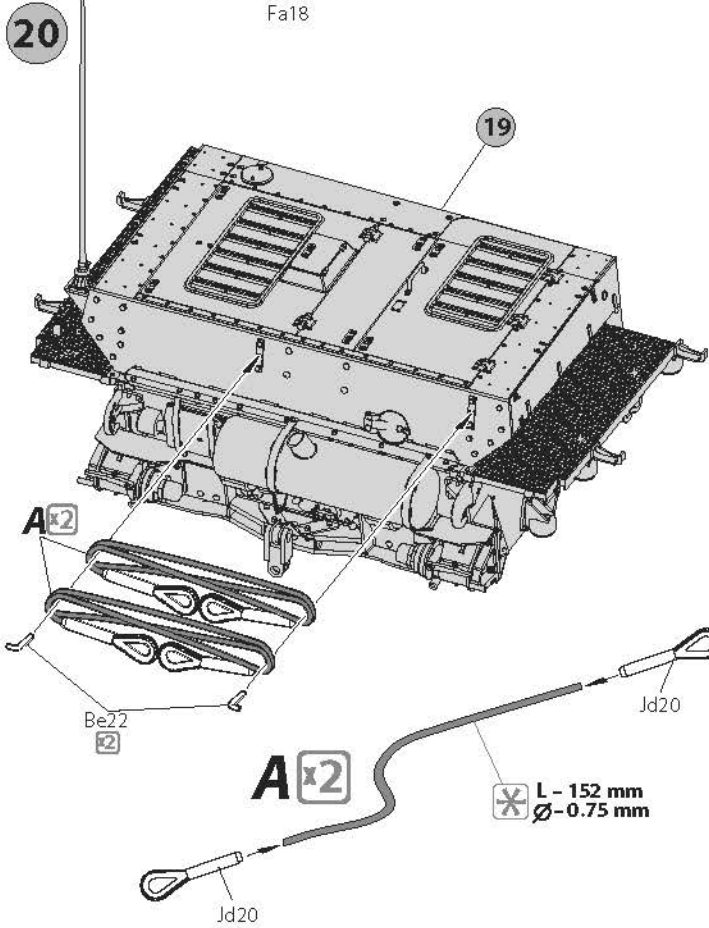
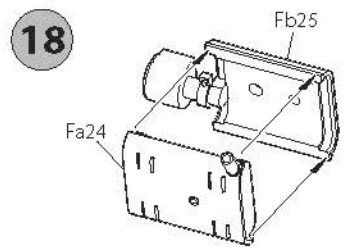
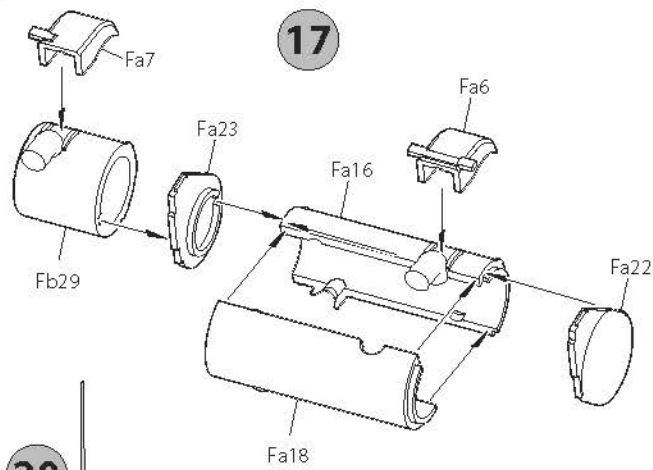
C

B



12







Open variant

Be28

23

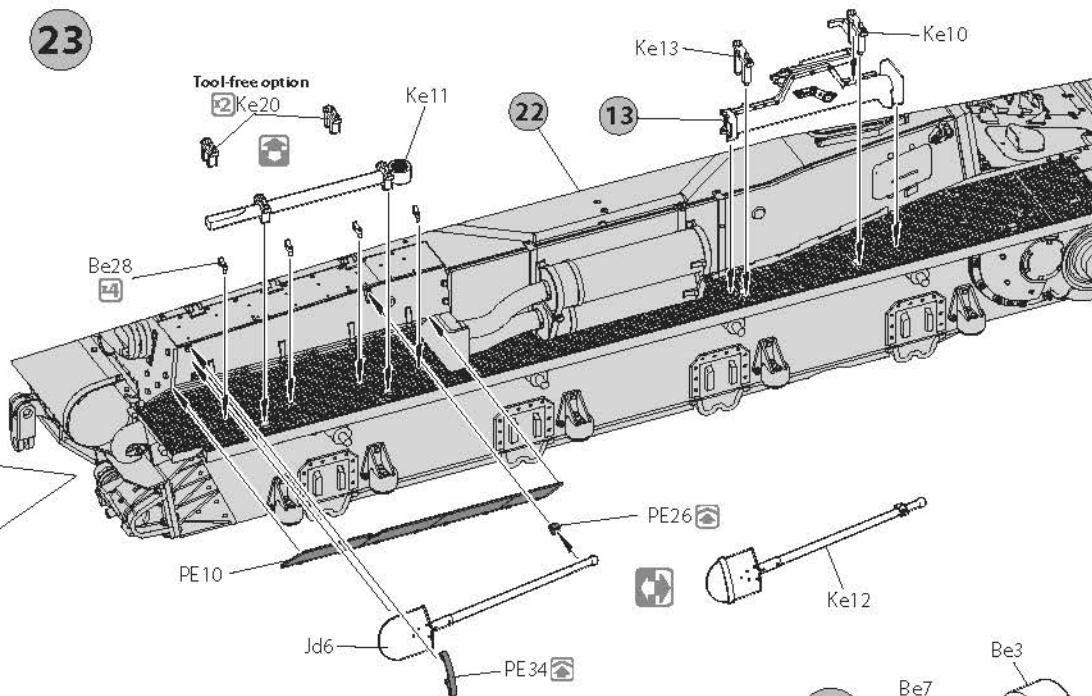
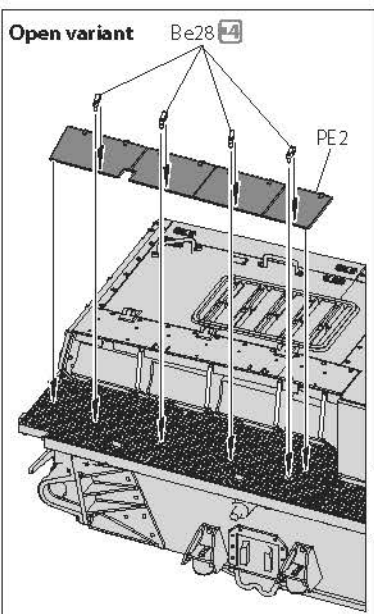
Tool-free option

Ke20

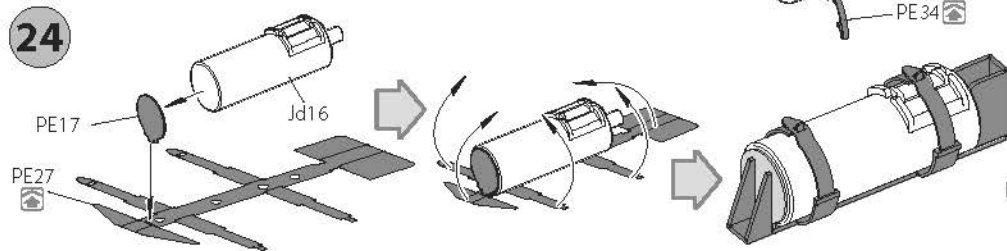
Ke11

Ke13

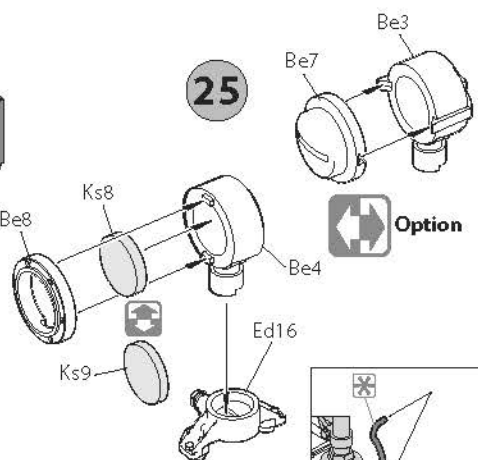
Ke10



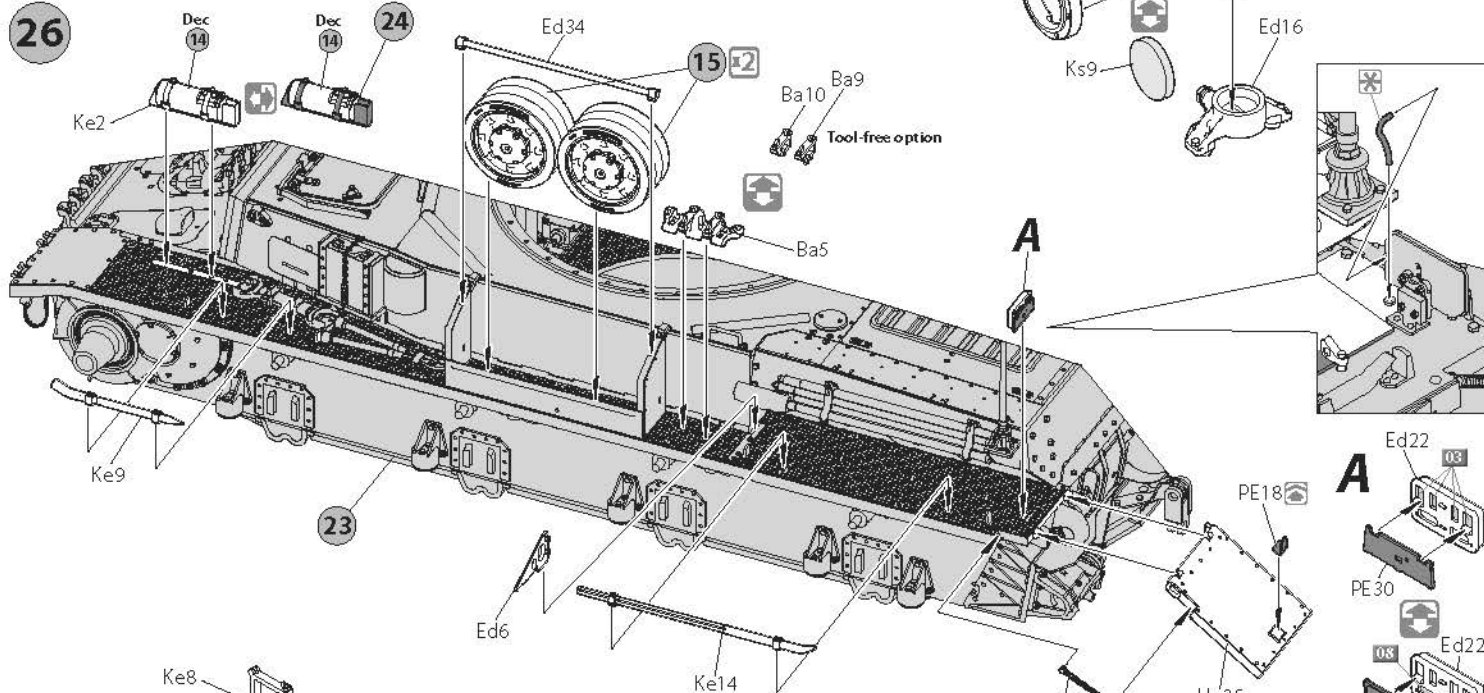
24



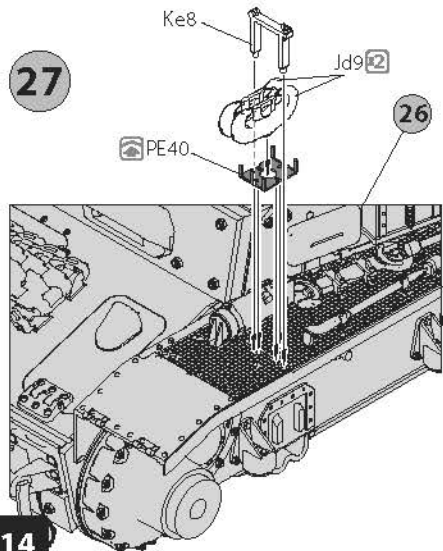
25



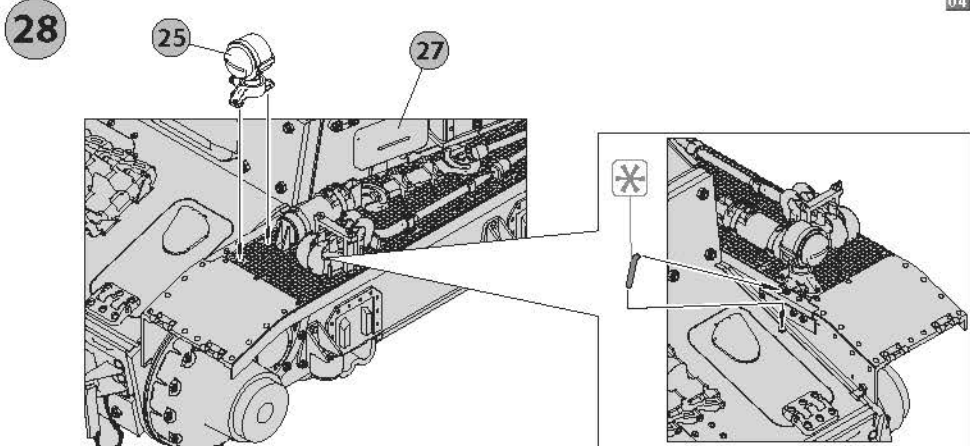
26



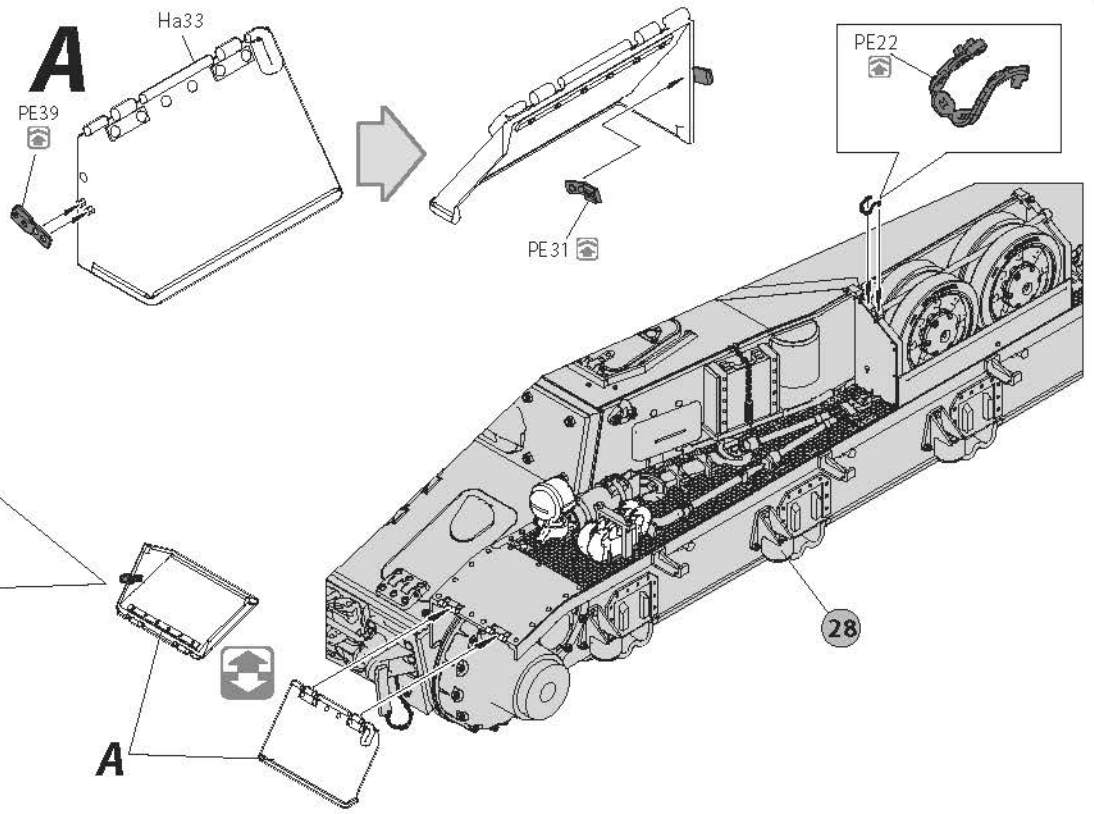
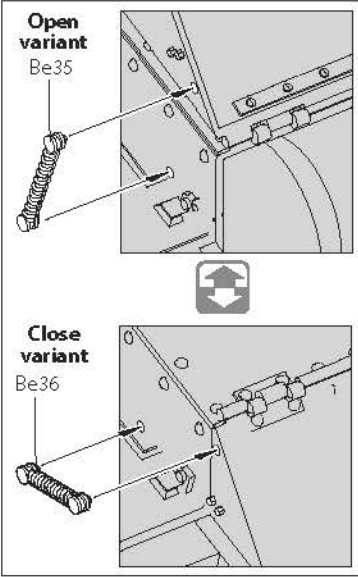
27



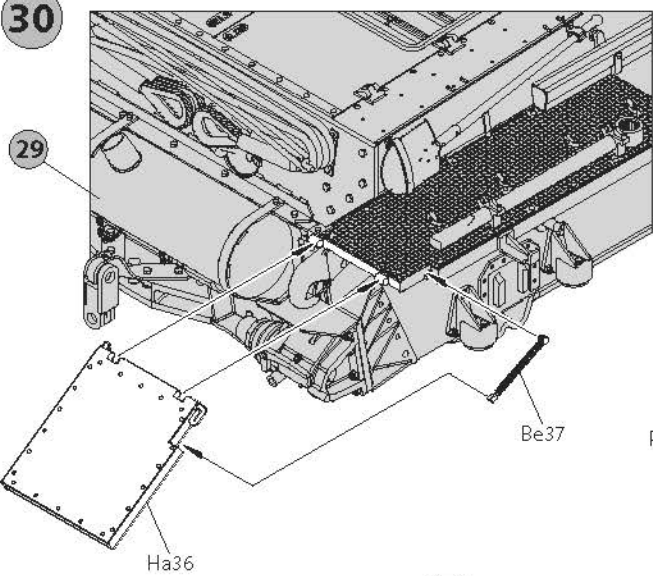
28



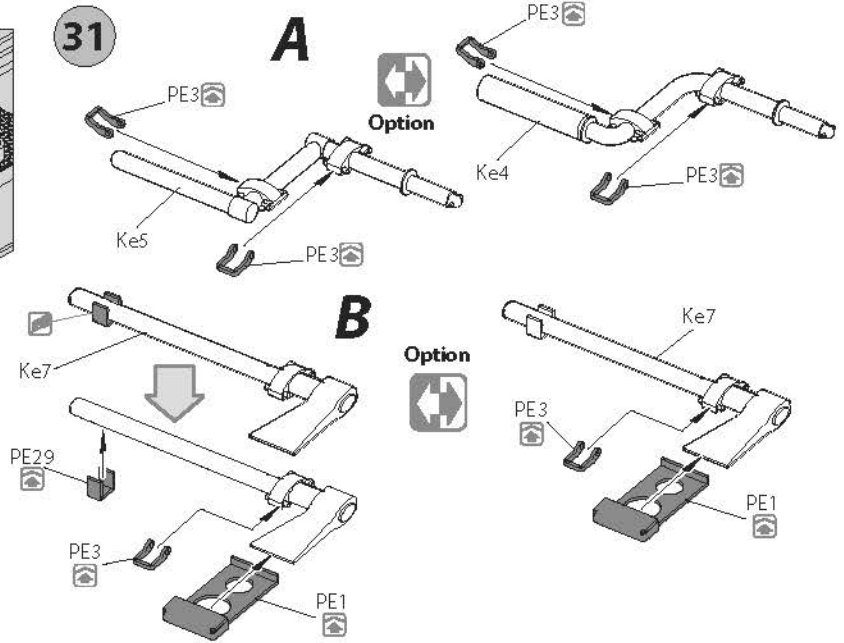
29



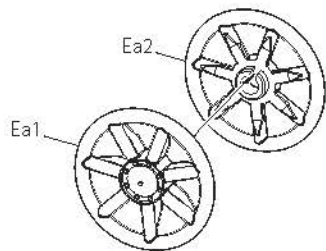
30



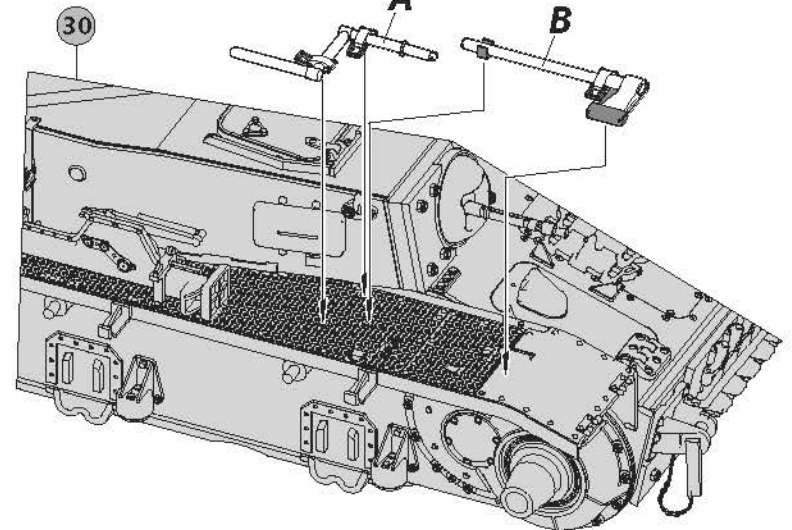
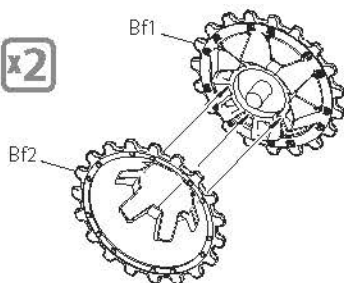
31



32 x2



33 x2

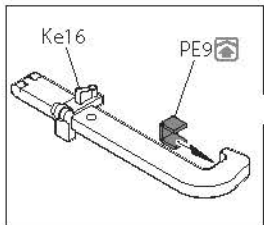




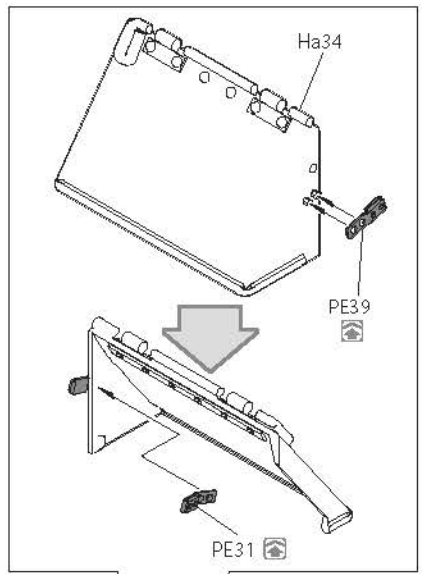
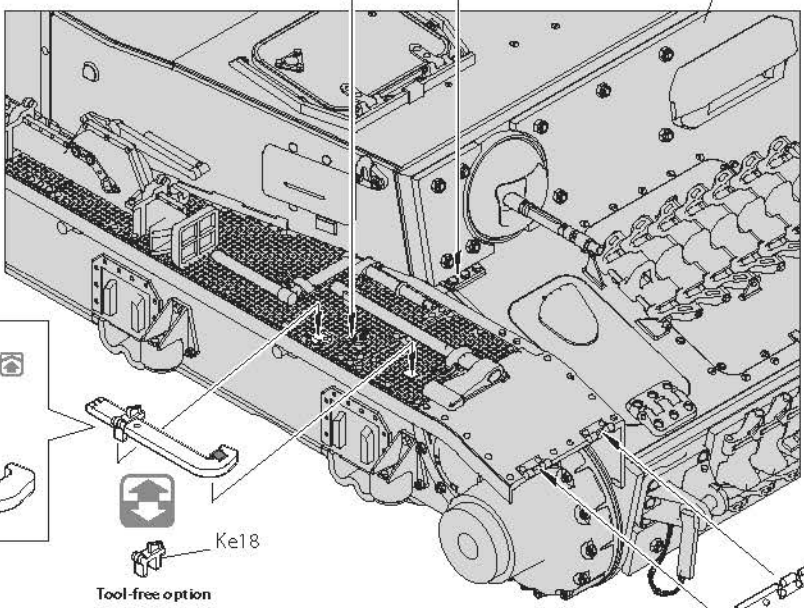
34

Fb8

31

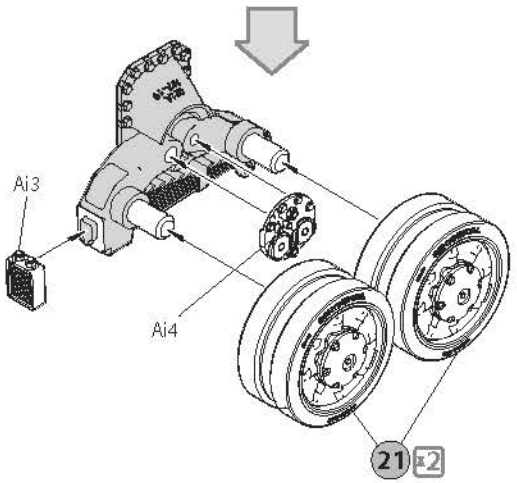
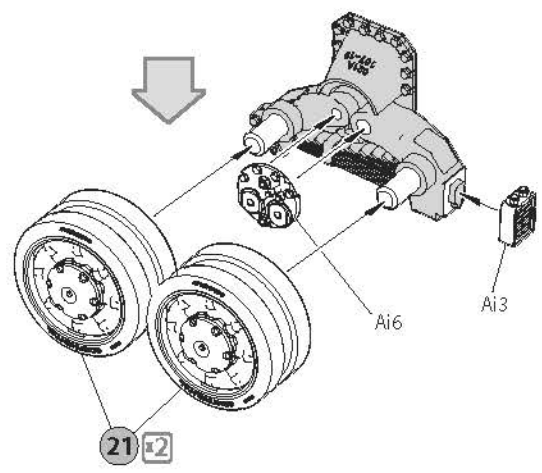
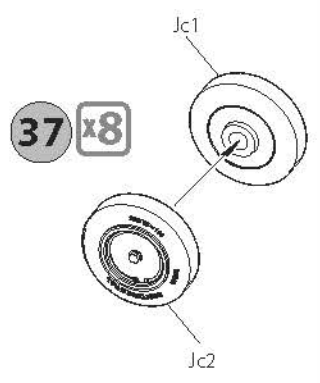
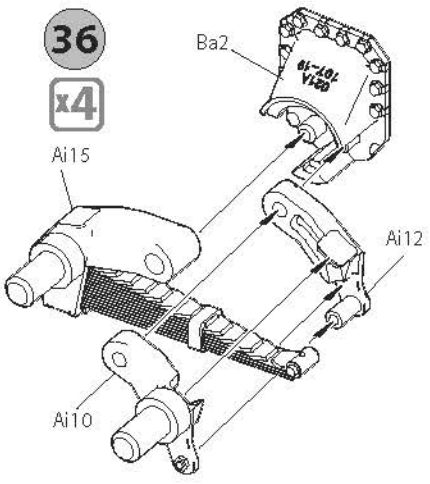
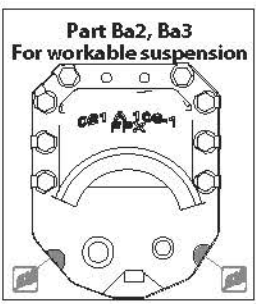
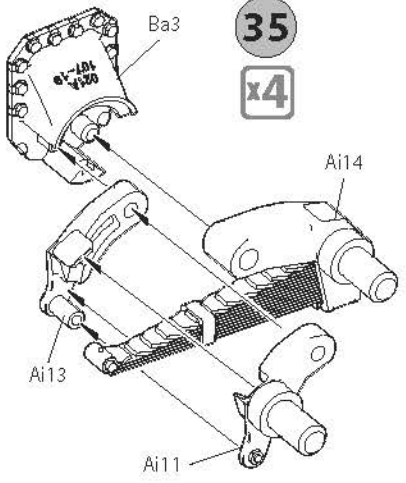
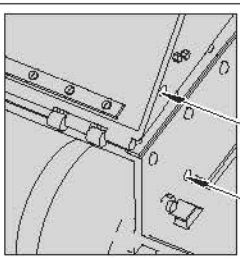
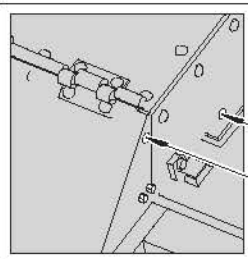


Ke18  
Tool-free option



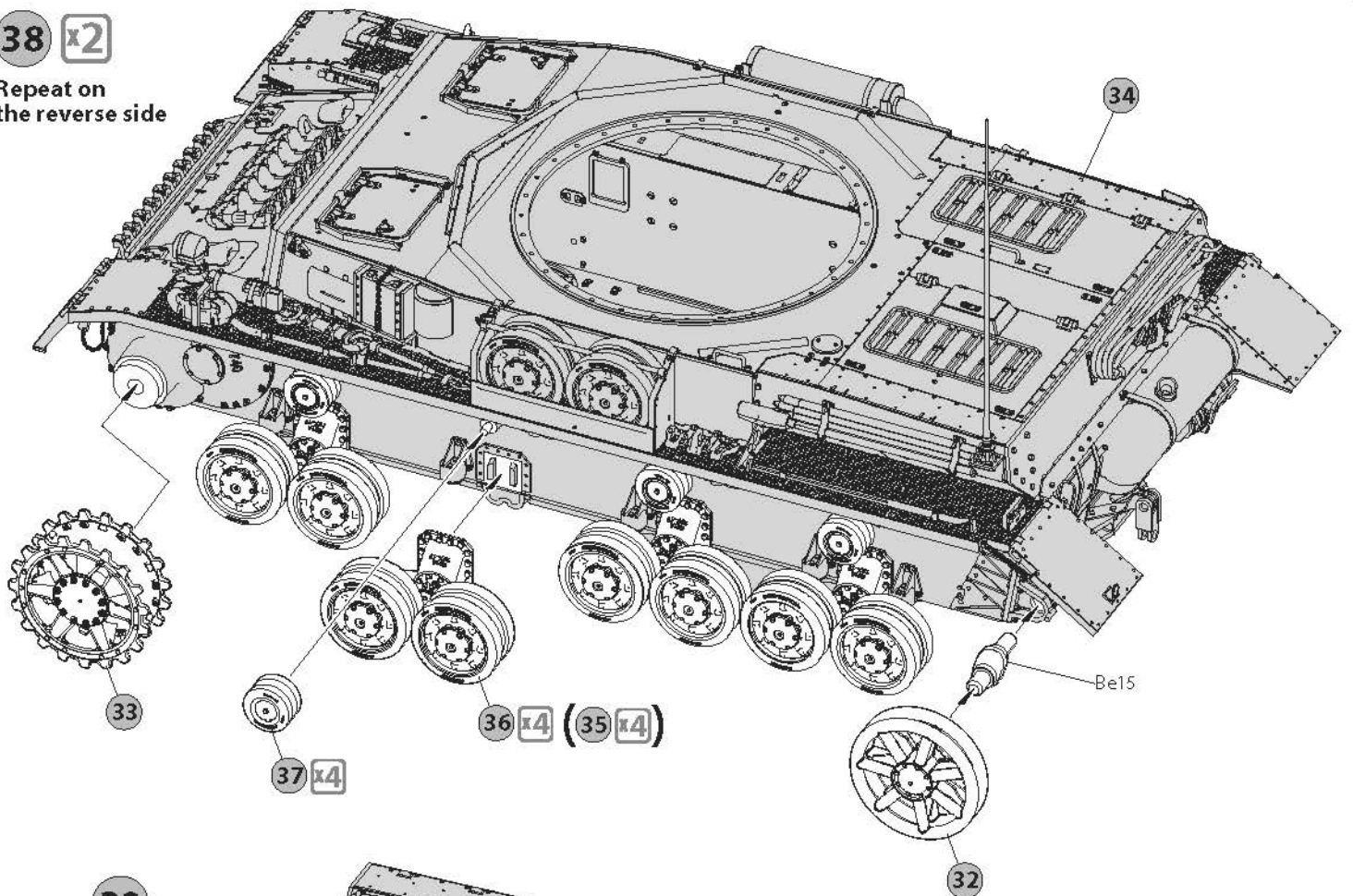
Close variant

Open variant

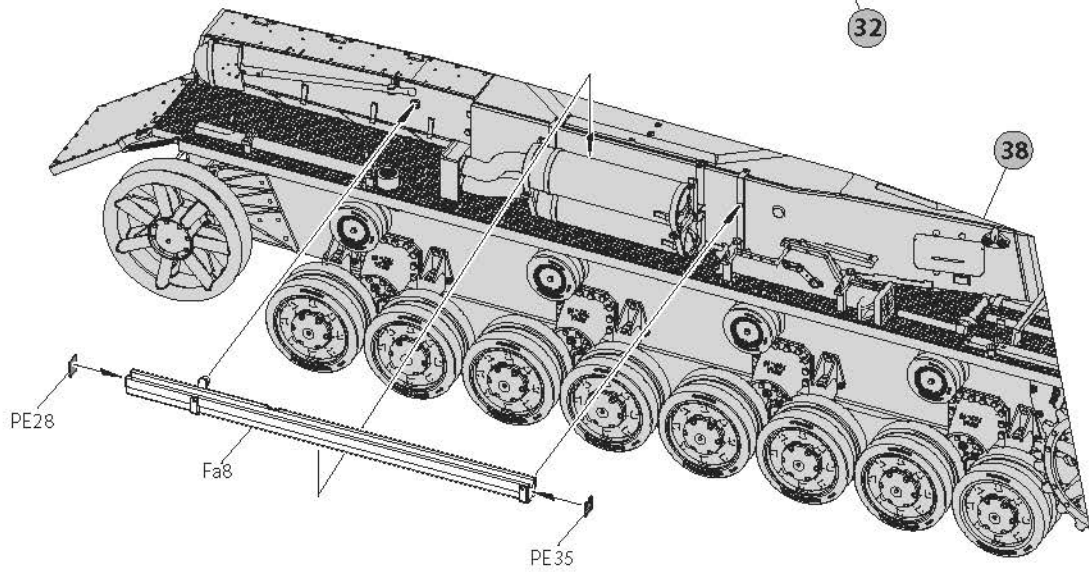


38 x2

Repeat on the reverse side

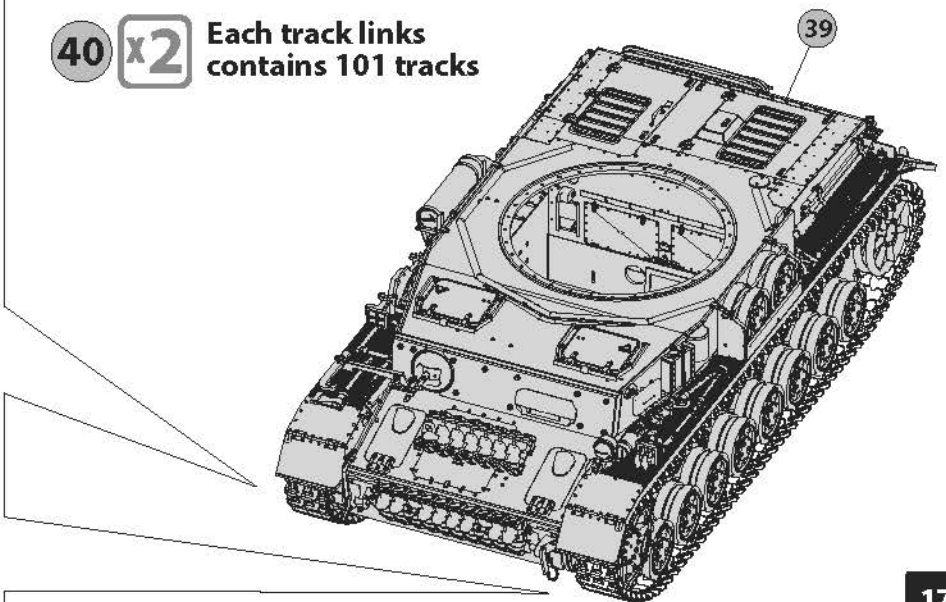
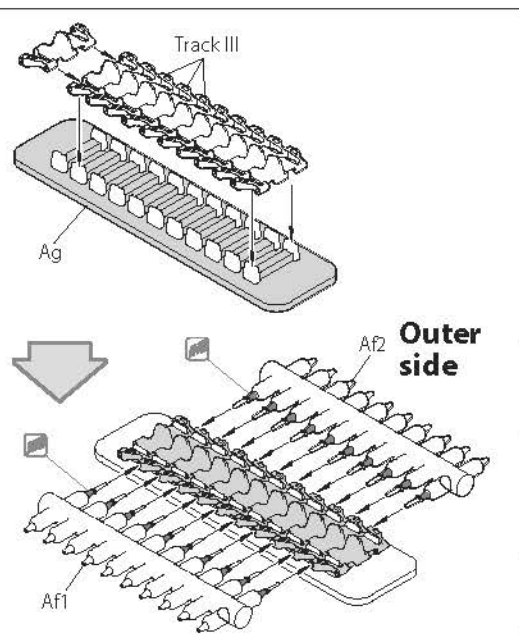


39

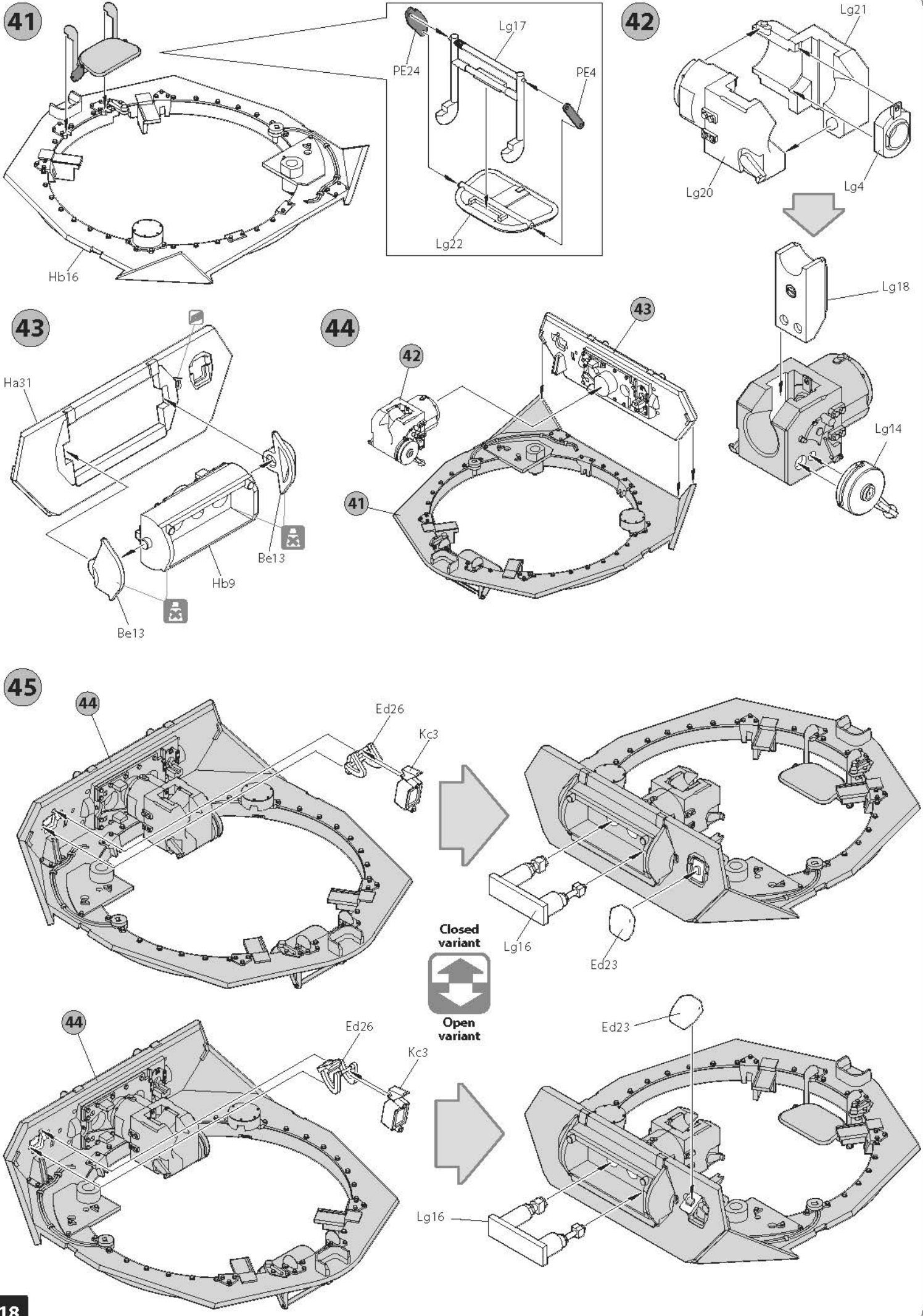


40 x2

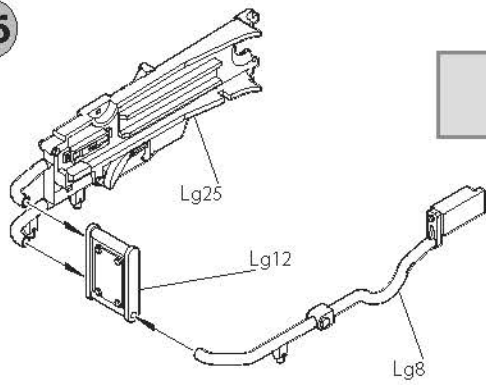
Each track links contains 101 tracks



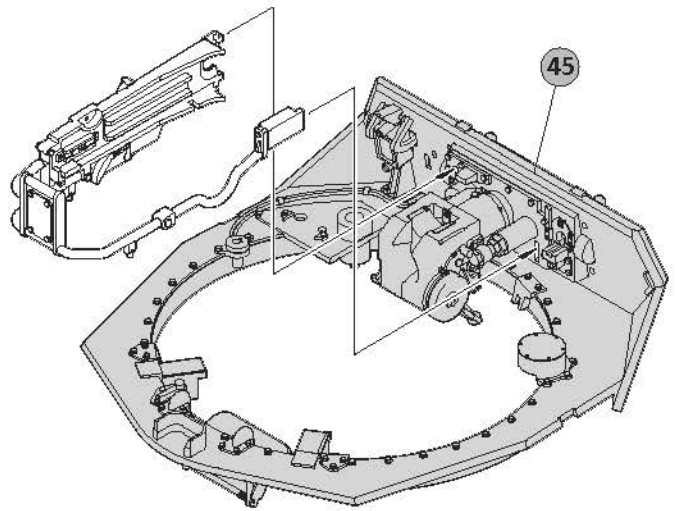




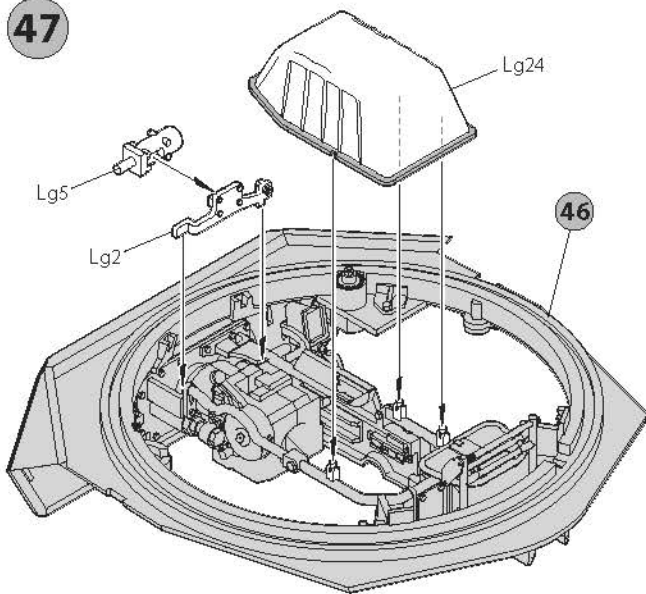
46



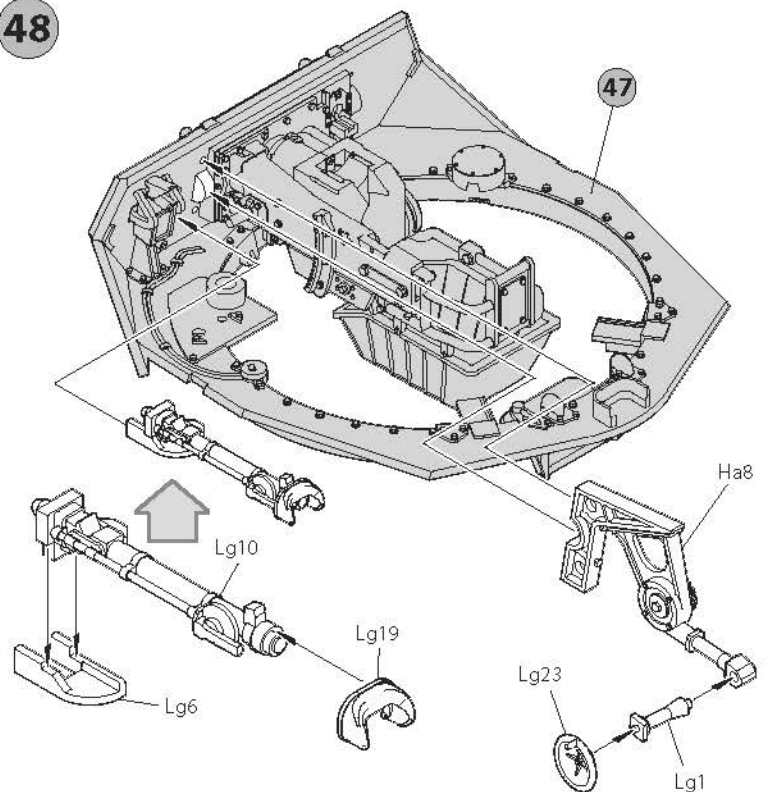
45



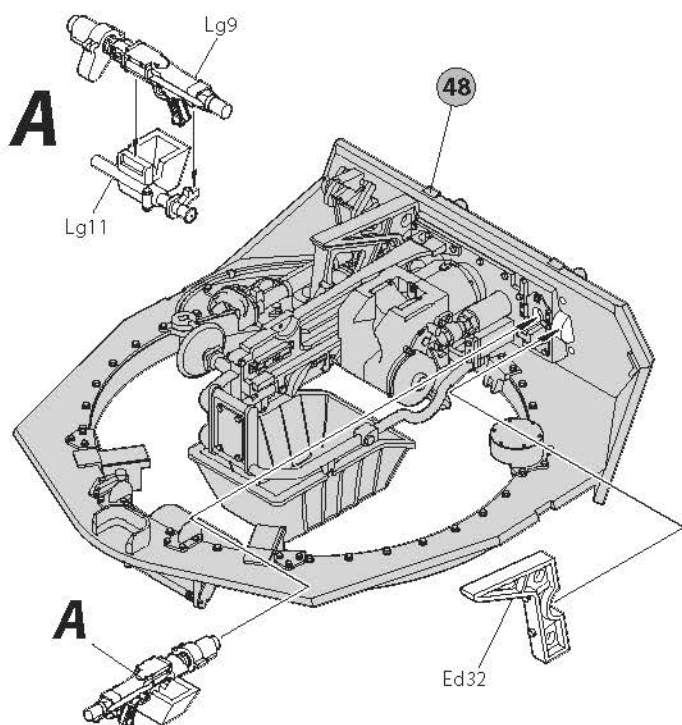
47



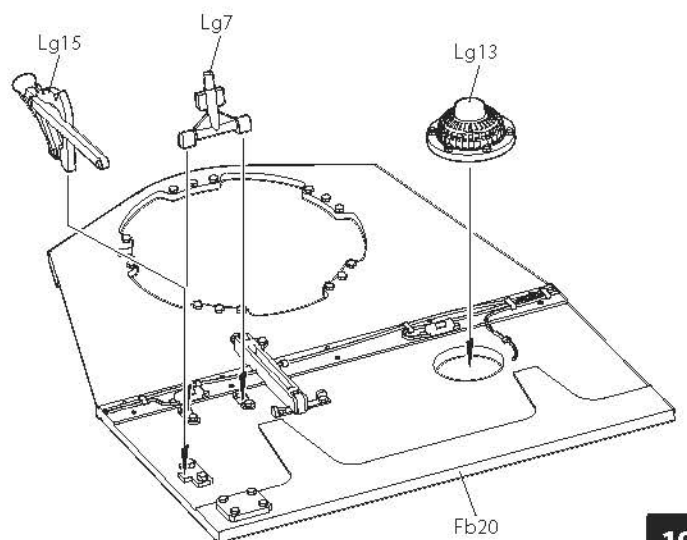
48



49

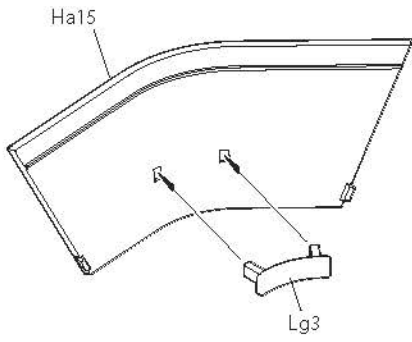


50

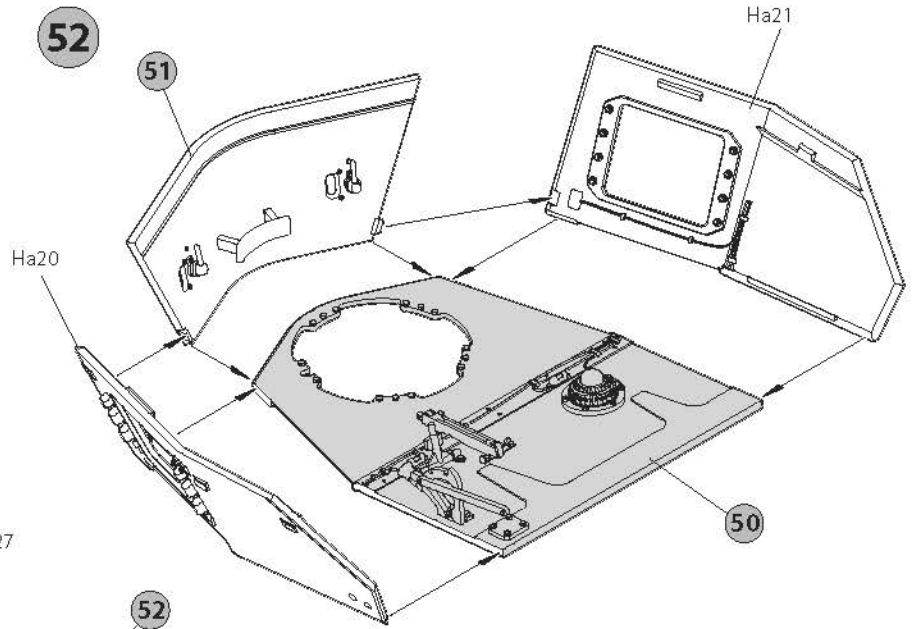




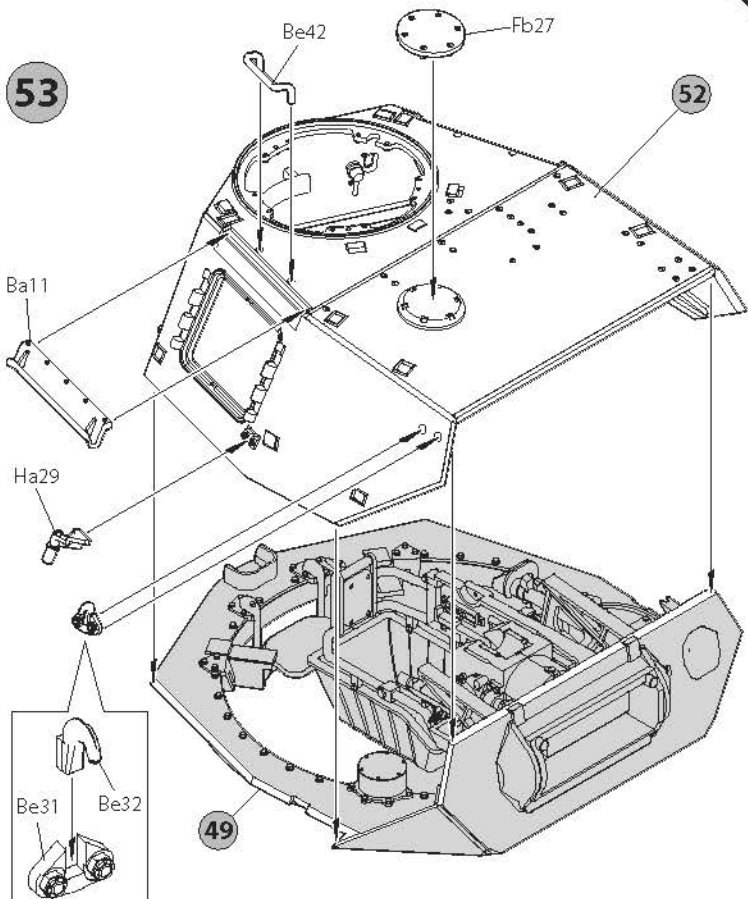
51



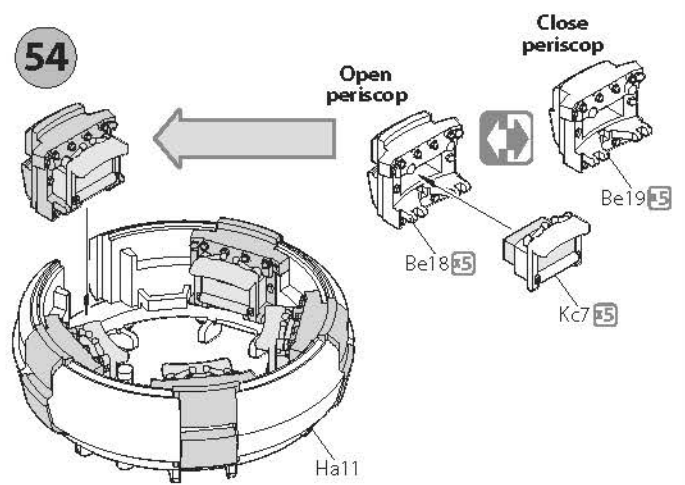
52



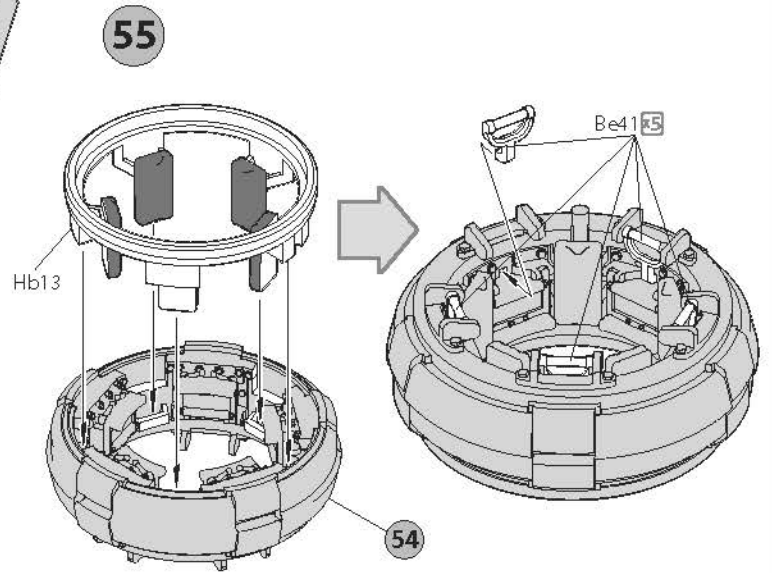
53



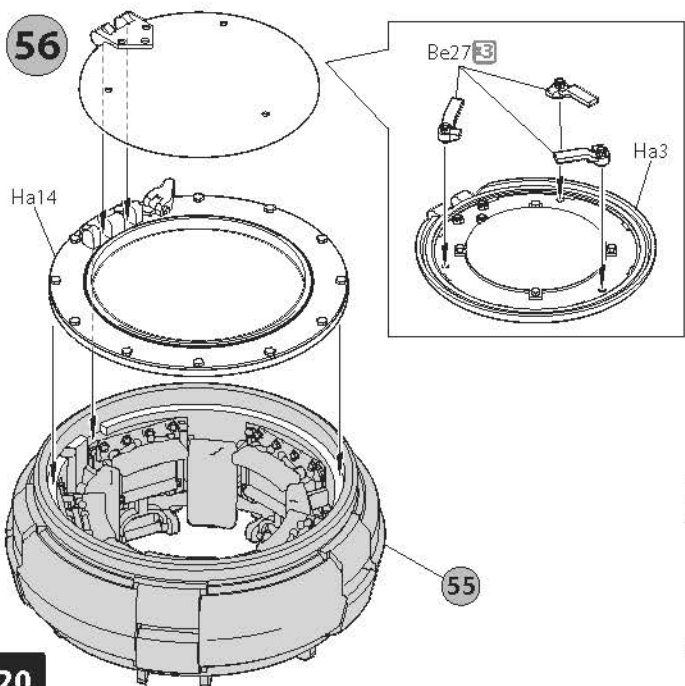
54



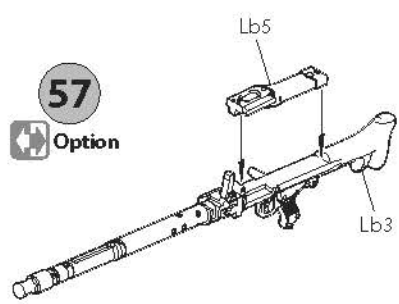
55



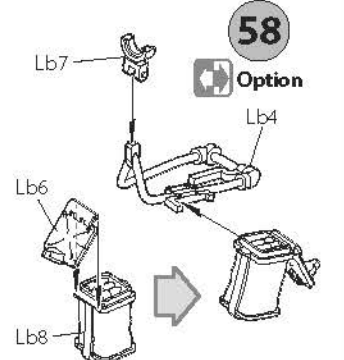
56



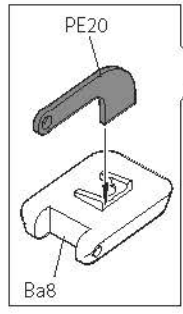
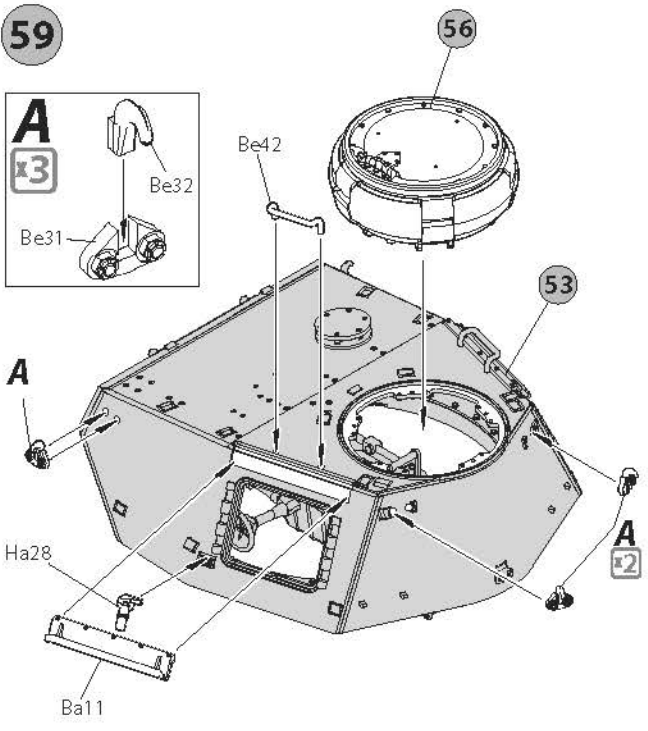
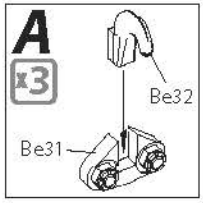
57



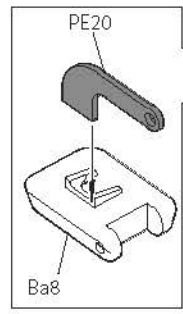
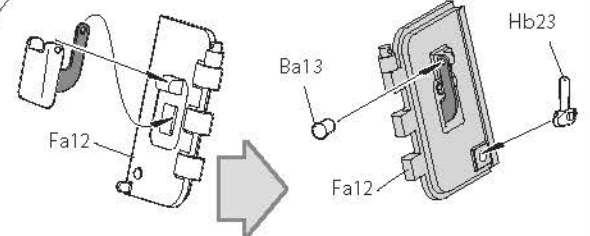
58



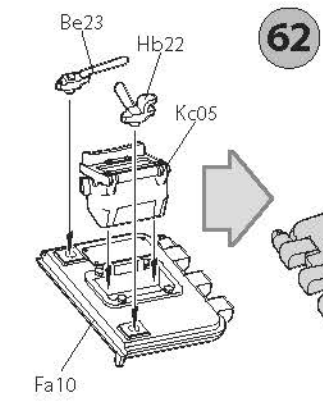
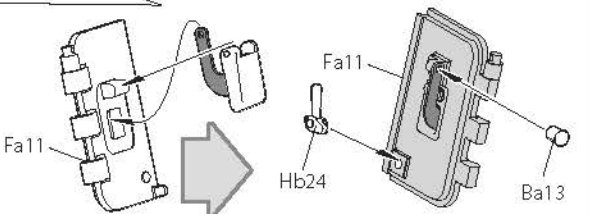
59



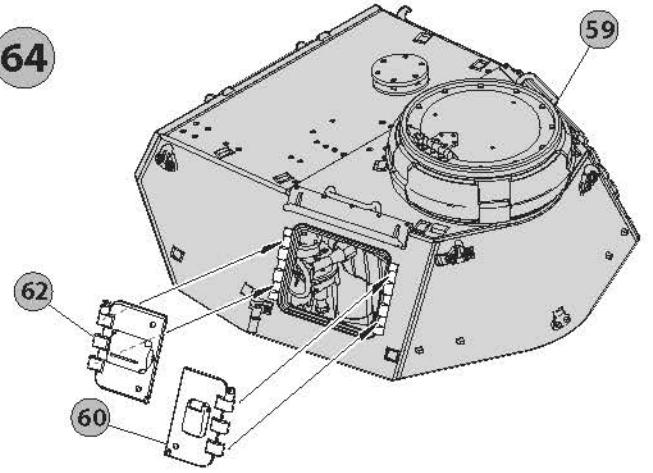
60



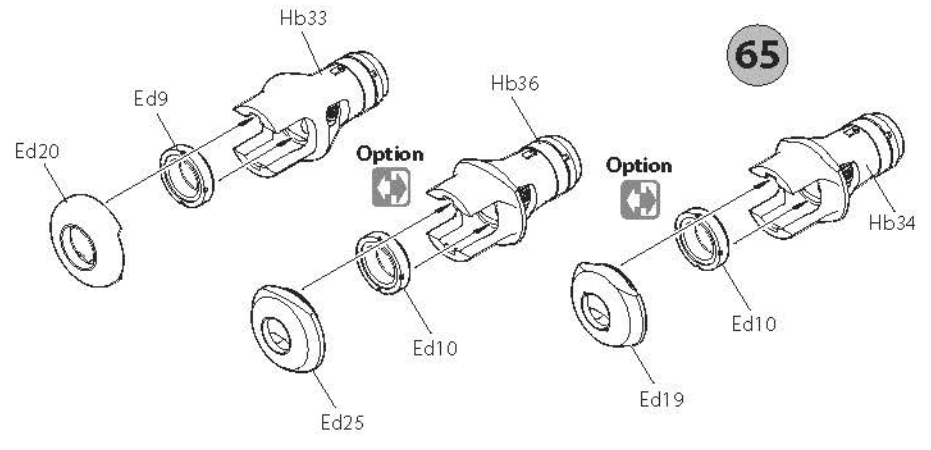
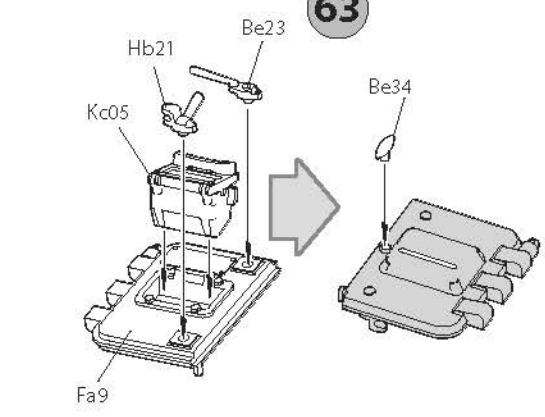
61



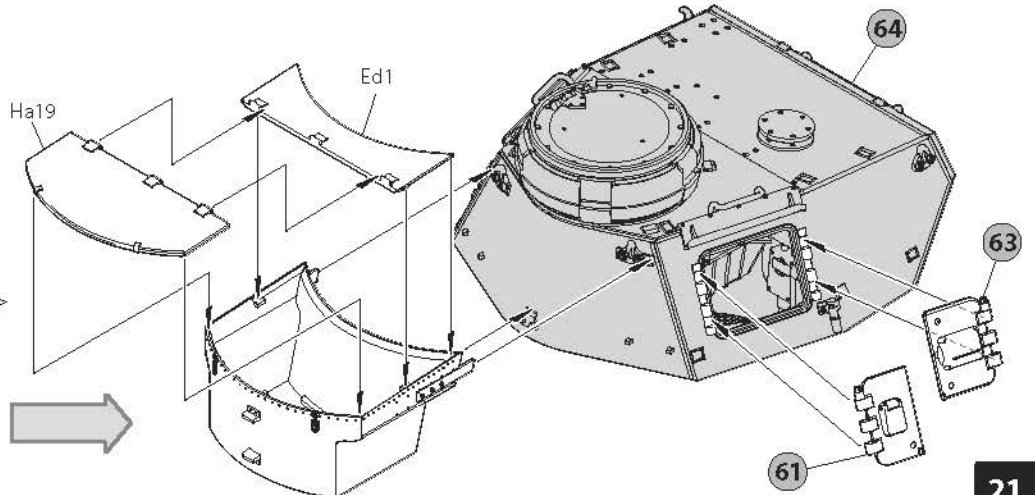
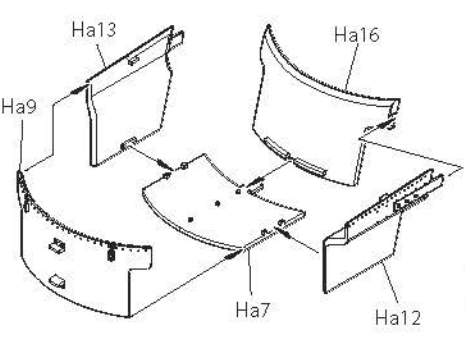
64



63

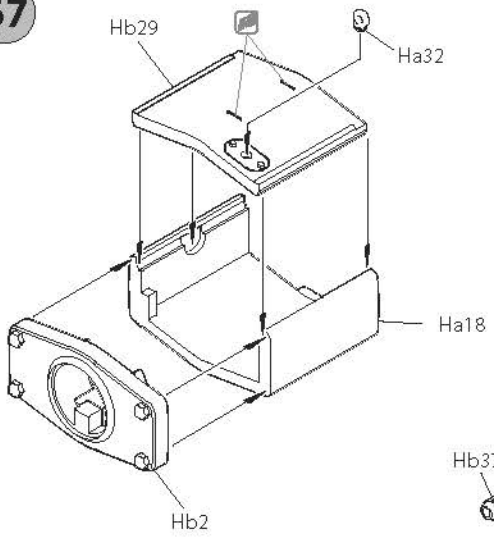


66

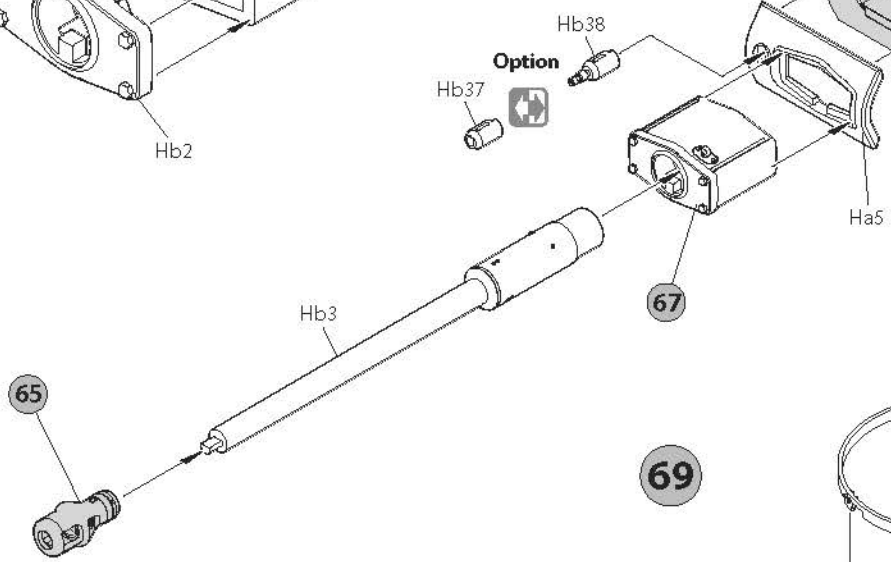
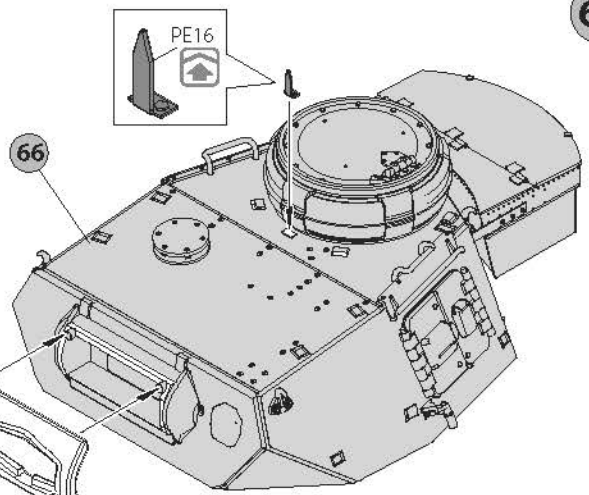




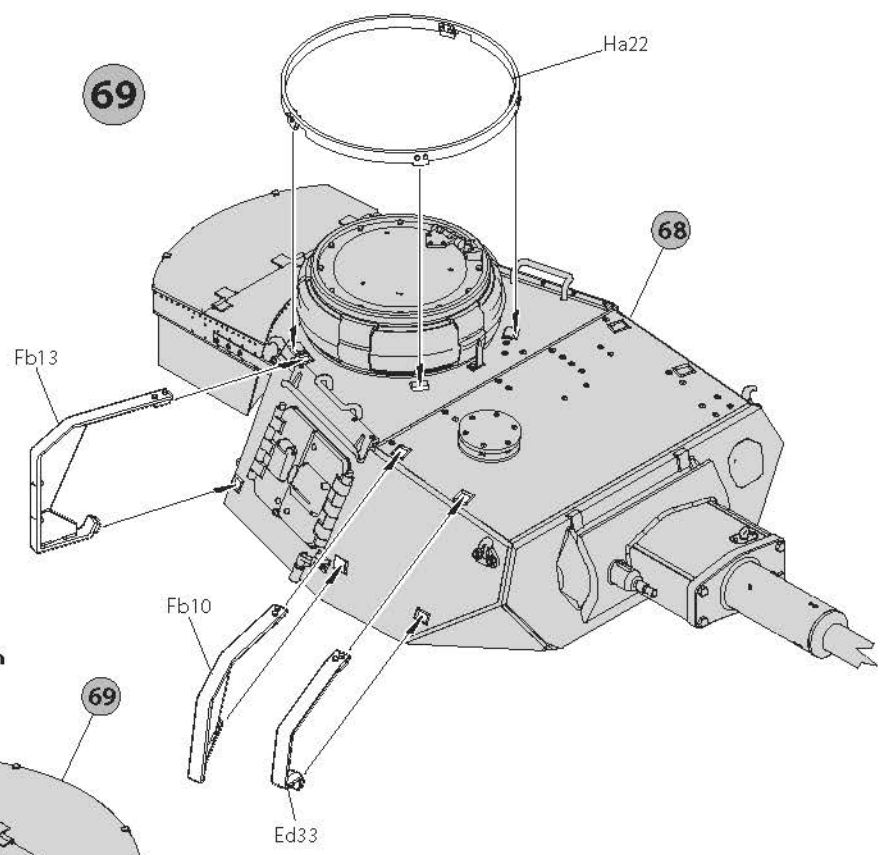
67



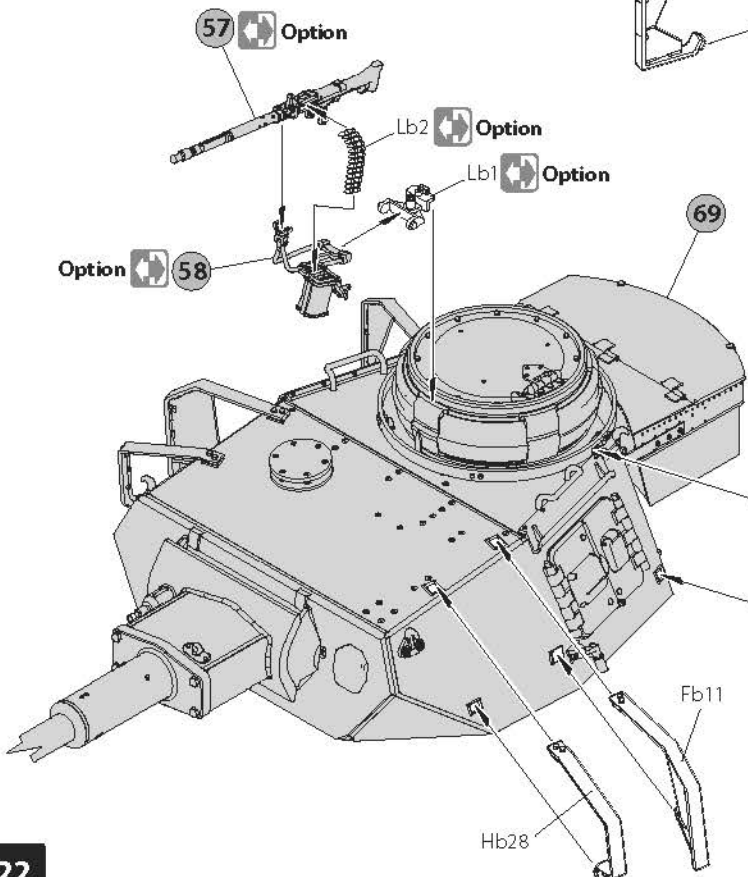
68



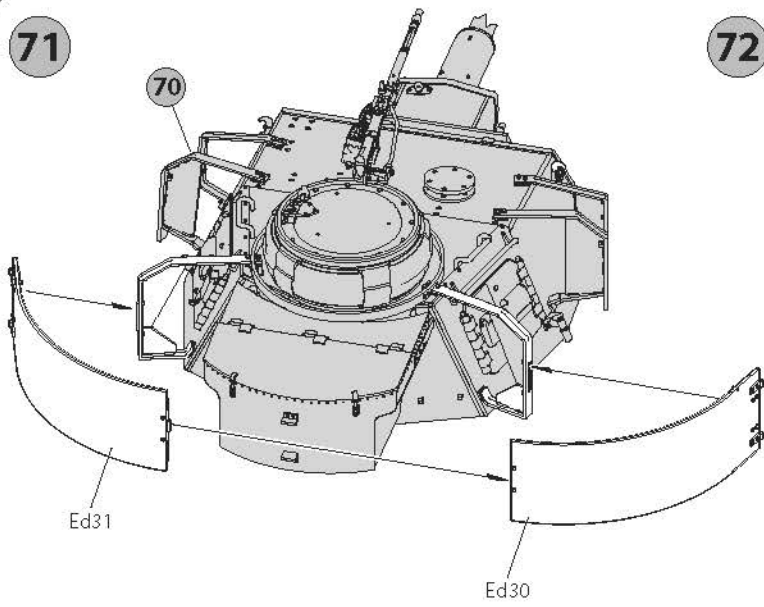
69



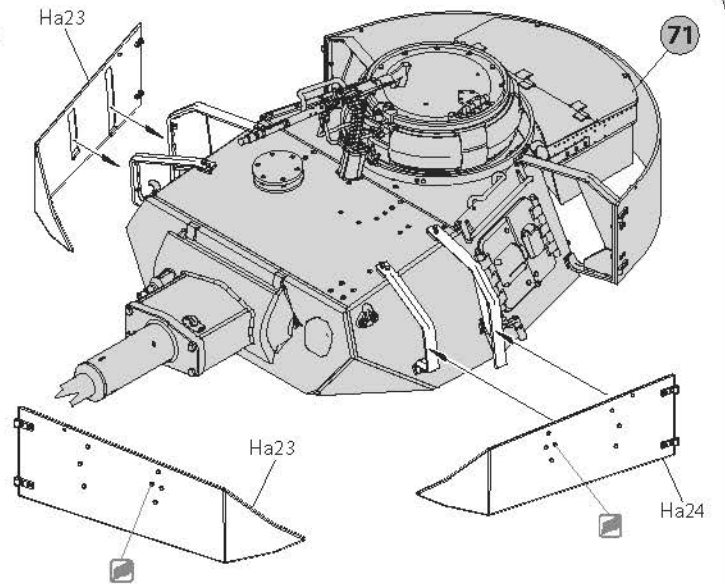
70



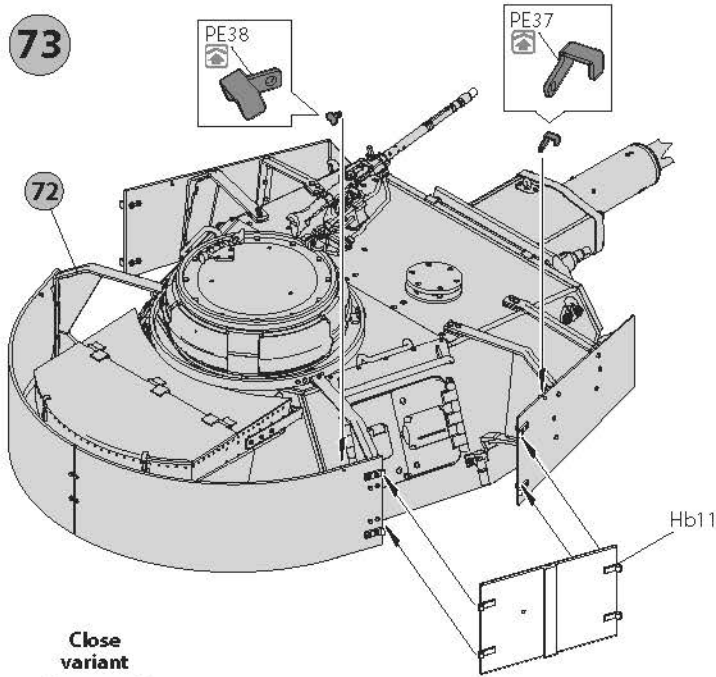
71



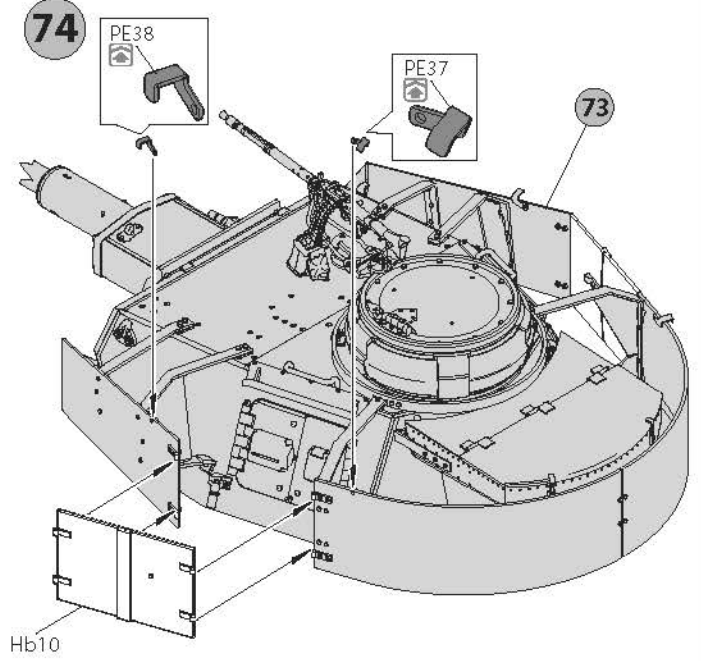
72



73



74



Close variant



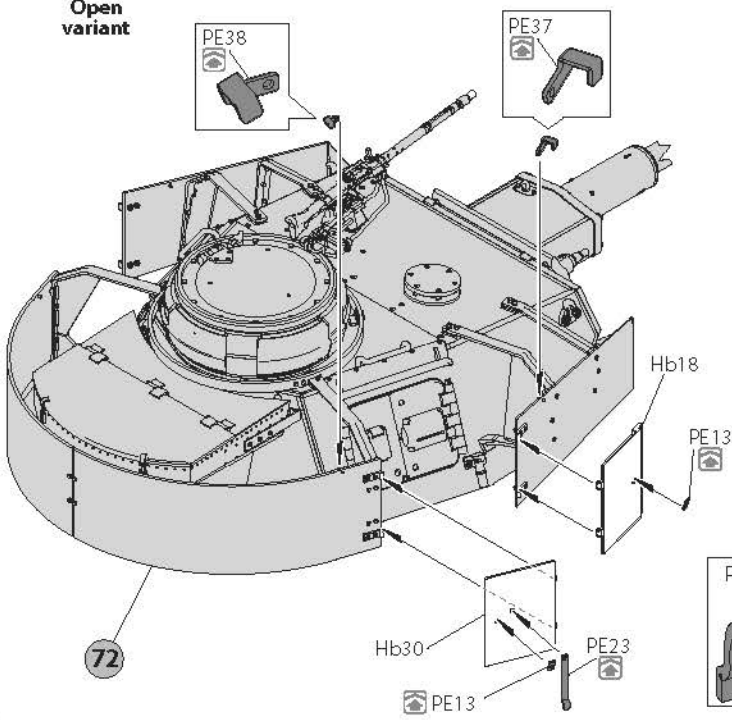
Open variant

Close variant

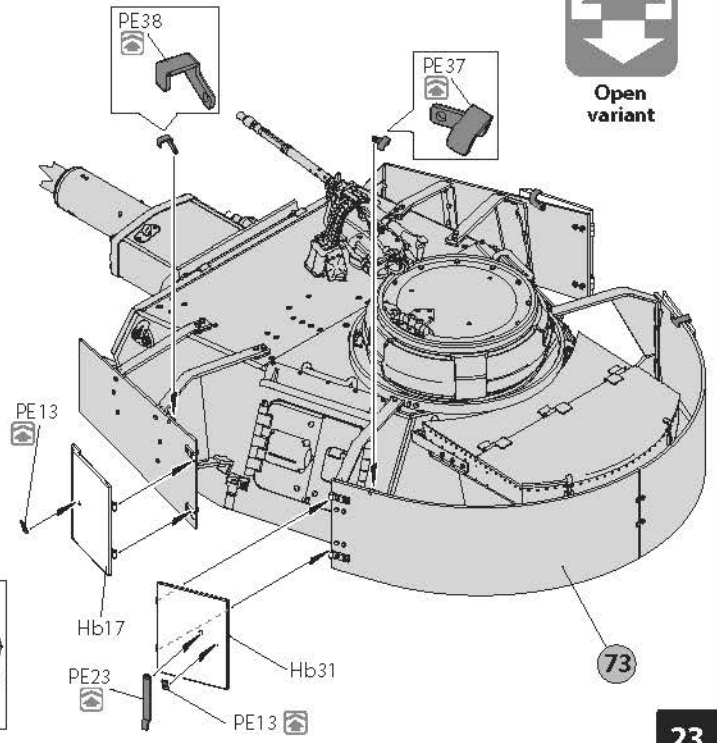


Open variant

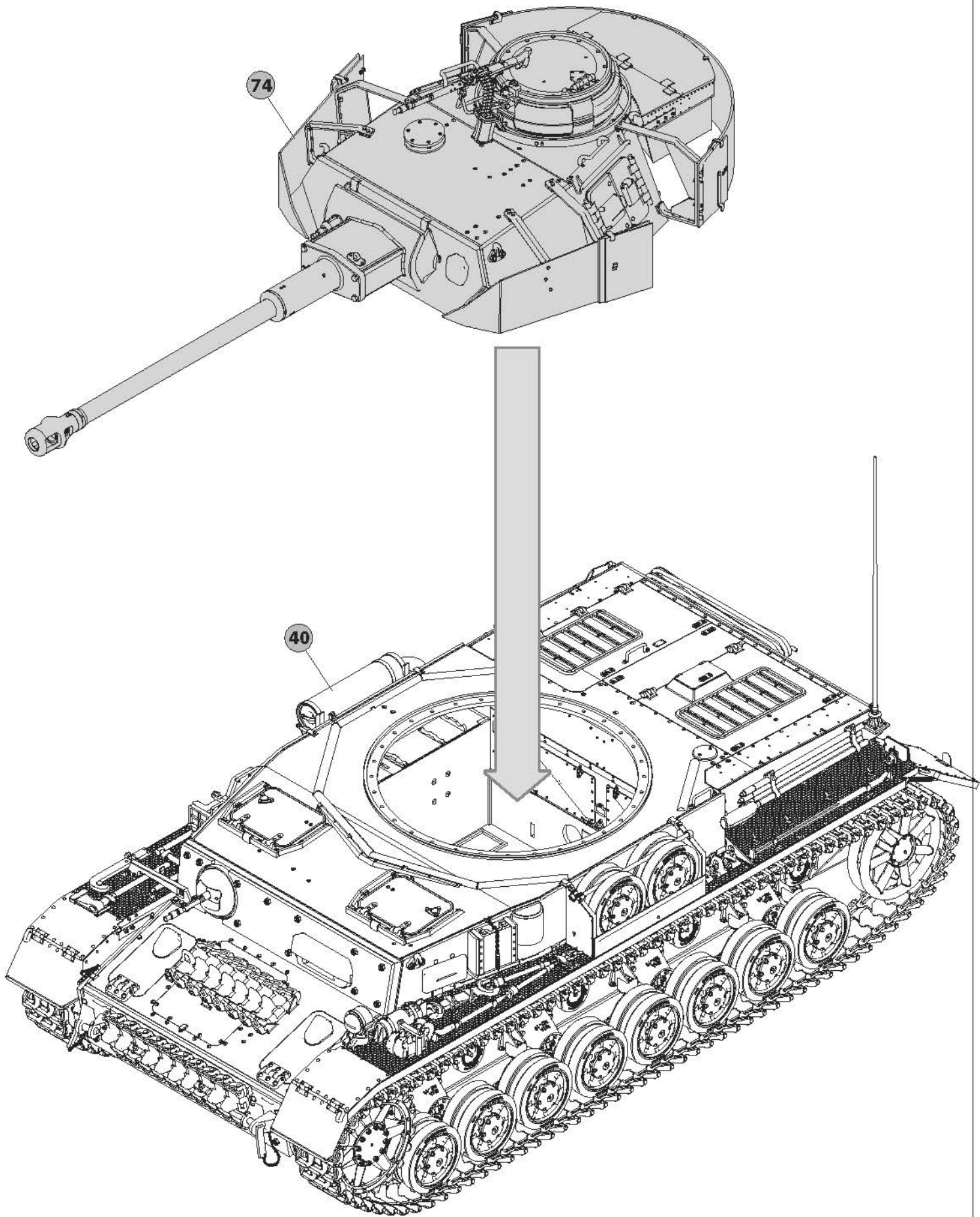
72



73









# BULGARIAN MAYBACH T-IV H

SCALE 1:35

PAINTING GUIDE 4

2nd Bulgarian Army. Sofia, December 1944





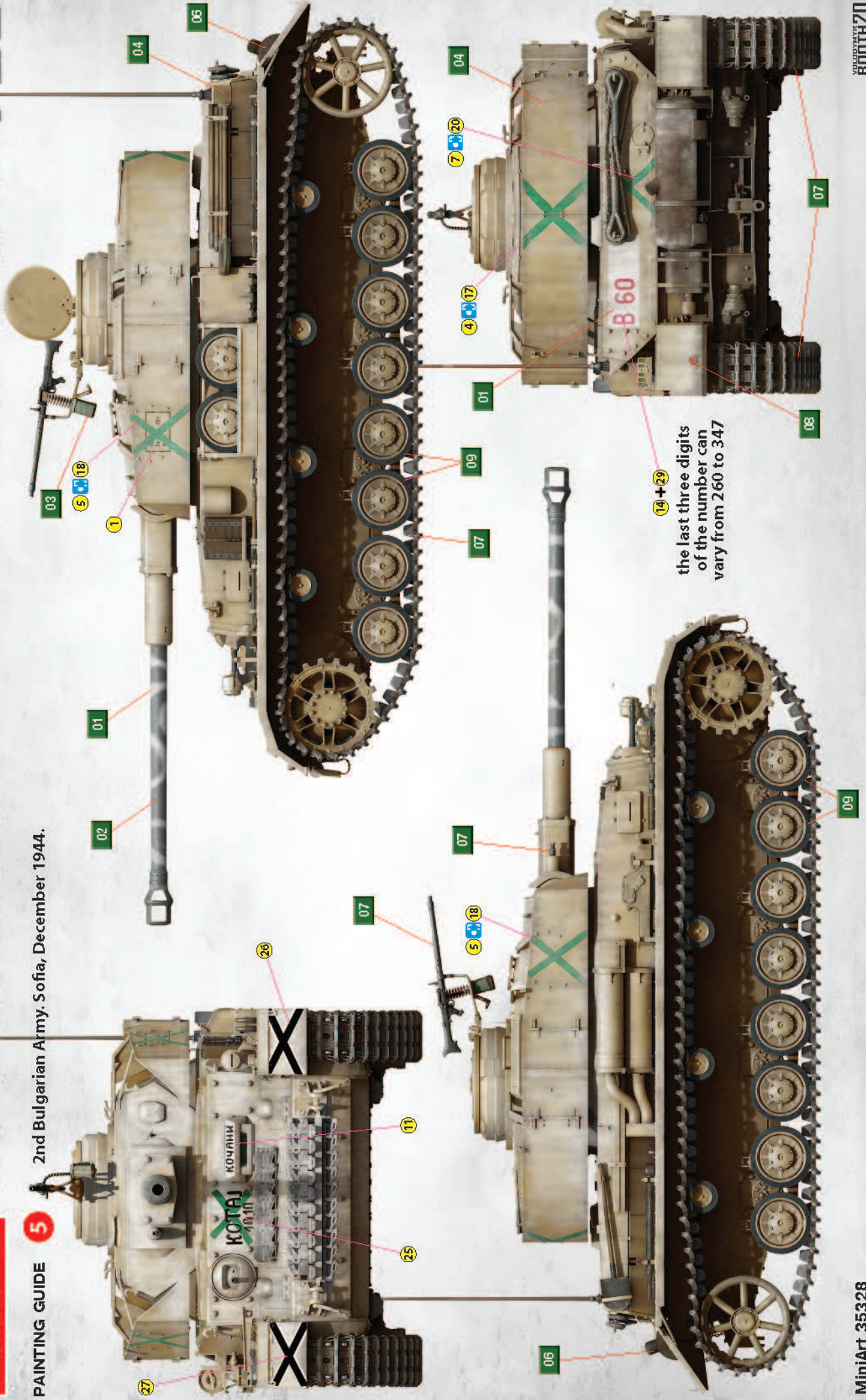
# BULGARIAN MAYBACH T-IV H

SCALE 1:35

PAINTING GUIDE

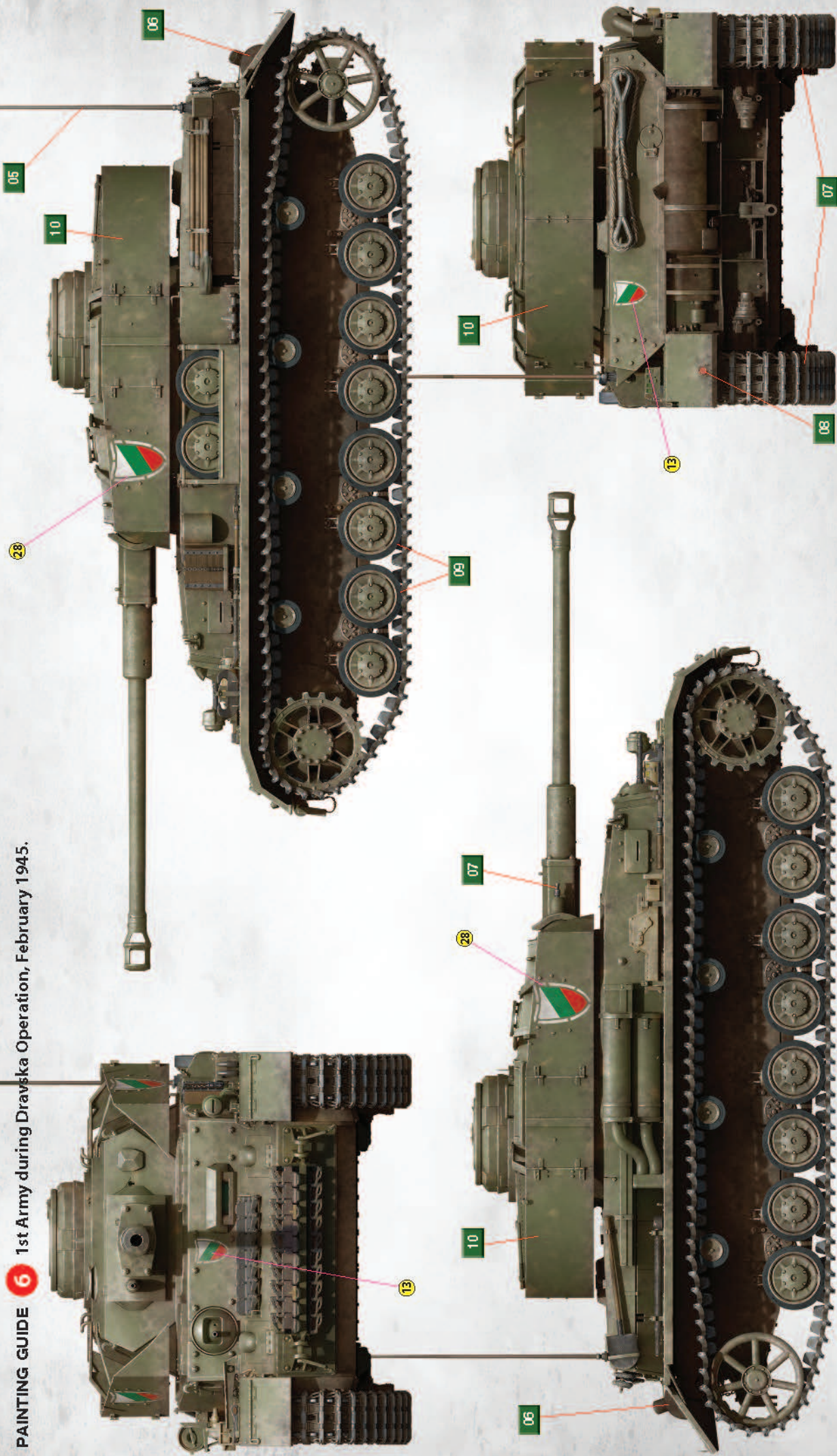
5

2nd Bulgarian Army, Sofia, December 1944.



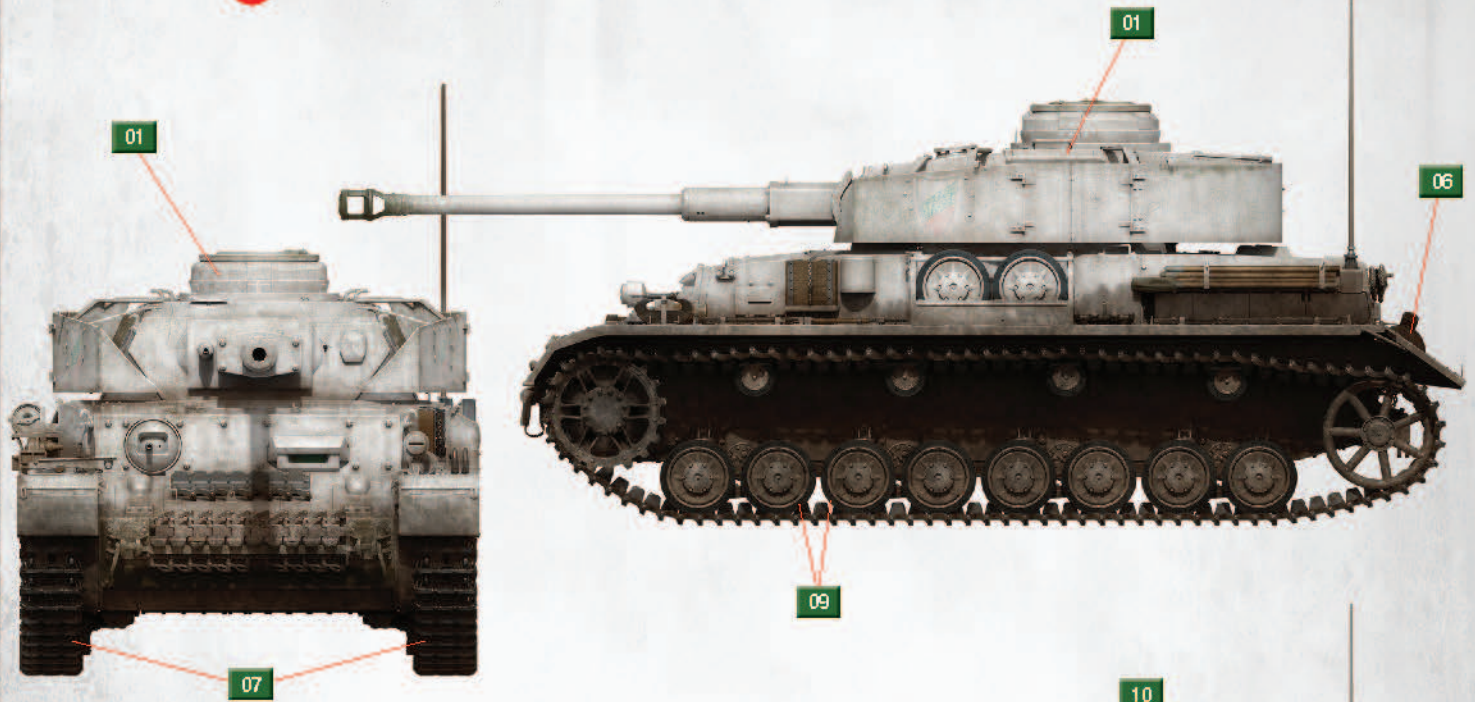


PAINTING GUIDE **6** 1st Army during Dravska Operation, February 1945.





PAINTING GUIDE **7** 1st Army, Hungary, March 1945.



PAINTING GUIDE **8** 1st Army, Hungary, April-May 1945.

