

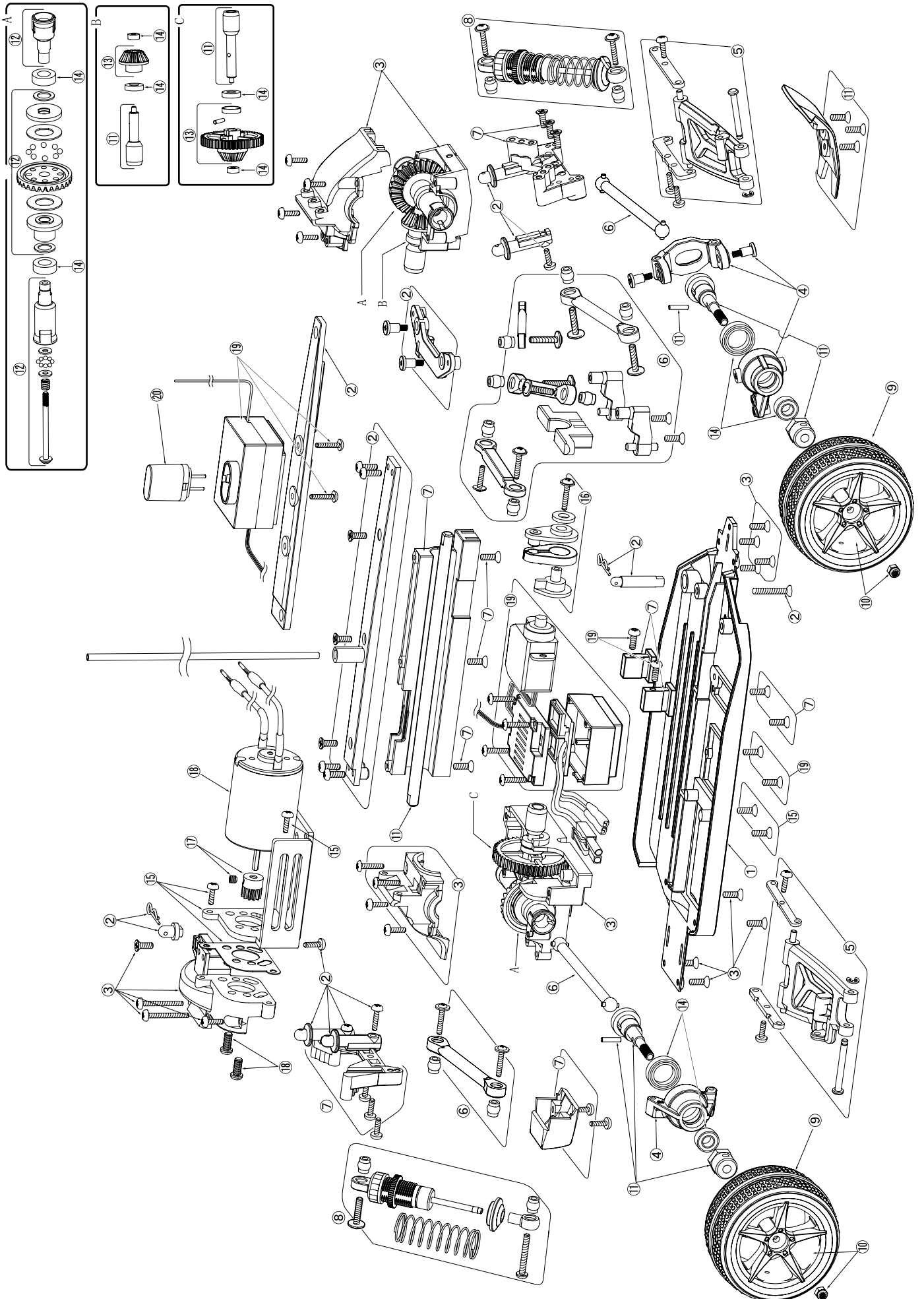


Mr. Fu

MAX18XXL

- Ⓒ **Service data**
- Ⓓ **Serviceunterlagen**
- Ⓕ **Informations de service**
- Ⓔ **documentos de servicio**
- Ⓘ **documenti di servizio**





| Ersatzteile / Spare parts / Parti di ricambi / Recambios | | | | |
|---|--------------------|----------|--------|--|
| | | | No. | |
| 1 | CHASSIS | X1 | 405012 | Chassis |
| 2 | UPPER DECK SET | X1 | 405013 | Obere Chassisplatte |
| 3 | GEAR CASE SET | X1 | 405014 | Getriebegehäuse |
| 4 | NUCKLE | X2 (L&R) | 405015 | Aufhängungsteile |
| 5 | LOWER ARM SET | X2 (F&R) | 405016 | Querlenker unten |
| 6 | UPPER ARM SET | X1 | 405017 | Querlenker oben |
| 7 | DAMPER HOLDER SET | X1 | 405018 | Dämpferhalter |
| 8 | DAMPER | x2 | 405019 | Stossdämpfer |
| 9 | TYRE | x2 | 405020 | Reifen |
| 10 | WHEEL | x2 | 405021 | Felgen |
| 11 | JOINT CAP SET | X1 | 405022 | Achsen/Mitnehmer |
| 12 | DiFF. GEAR | X1 | 405023 | Differenzial |
| 13 | DRIVE GEAR | X1 | 405024 | Haupt/Kegelzahnrad |
| 14 | METAL BEARINGS | X1 | 405025 | Gleitlagersatz Metall |
| 15 | ALUMINUM HEATSINK | X1 | 405026 | Aluminium Kühlkörper |
| 16 | SERVO SAVER | X1 | 405027 | Servosaver |
| 17 | PINION GEAR (12T) | X1 | 405028 | Ritzel |
| 18 | MOTOR | X1 | 405029 | Elektromotor 380 |
| 19 | SERVO/RECEIVER/AMP | X1 | 405030 | Steuereinheit (Servo,Empfänger,Regler) |
| 20 | CRYSTAL | X1 | 405031 | Quarz |
| 21 | NI-MH BATTERY | X1 | 608040 | Akku NimH 1100mAh |
| 22 | BODY | X1 | 405032 | Karosserie Mr.Fu |
| 22 | | X1 | 405033 | Karosserie MAX18XXL |
| 23 | CHARGER | X1 | 405034 | Ladegerät |