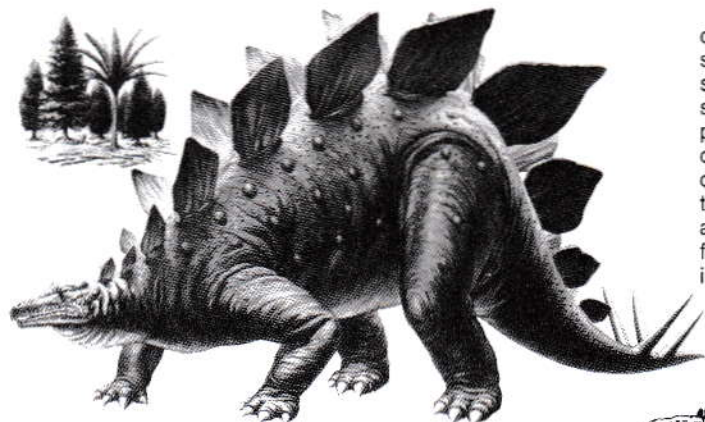


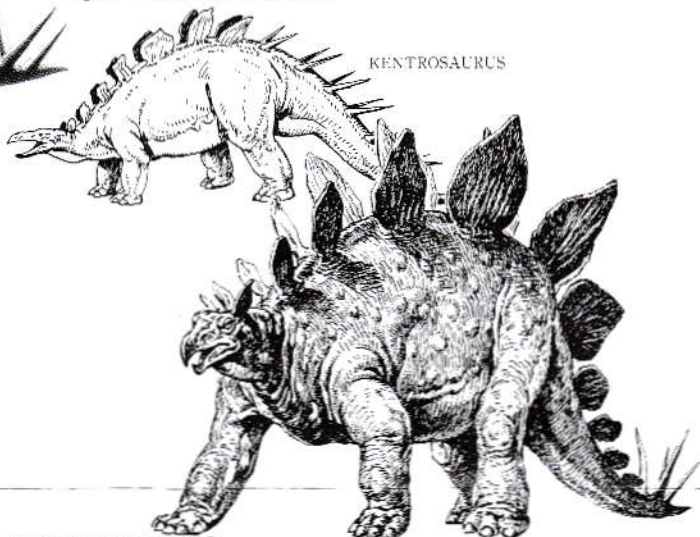
# STEGOSAURUS STENOPS

PREHISTORIC WORLD SERIES

\*HIGH ACCURACY FROM THOROUGH RESEARCH\* \*LIFELIKE SKIN APPEARANCE\* \*HIGHLY ACCURATE IN SCALE AND POSE



closeness of the bones in the tail it is felt that the Stegosaurus could only make short protective movements with its spike studded tail, rather than swing it around freely for safety from other Carnivorous. The twin rows of bony plates are thought to have been for protection of its spinal column and in the Stegosaurus Stenops were not symmetrical in arrangement. The Stegosaur family includes the Kentrosaurus which had the armoured plates of the lumbar and tail replaced with spikes, and the Scelidosaurus, the first of the Stegosaur, which appeared during the beginning of the Jurassic period.



KENTROSAURUS

Perhaps the best known of all the plated, or armoured, dinosaurs was this creature that lived during the late Jurassic period some 195-136 million years ago. With a length of six meters and a weight of about 2 tons, this peaceful vegetarian is believed to have lived in the swampy areas of the world, feeding upon soft plants that grew in humid and hot climates. It had an extremely small head, as compared with the size of its body, and its brain was about the size of a small walnut. It's now believed that this brain only worked the jaws and warned when food or danger was near. It had a small birdlike beak and chewed its food with small, deepset teeth. To facilitate movement, it had two additional brains, or nerve systems, which moved the legs and swung the tail in a danger situation. Due to the

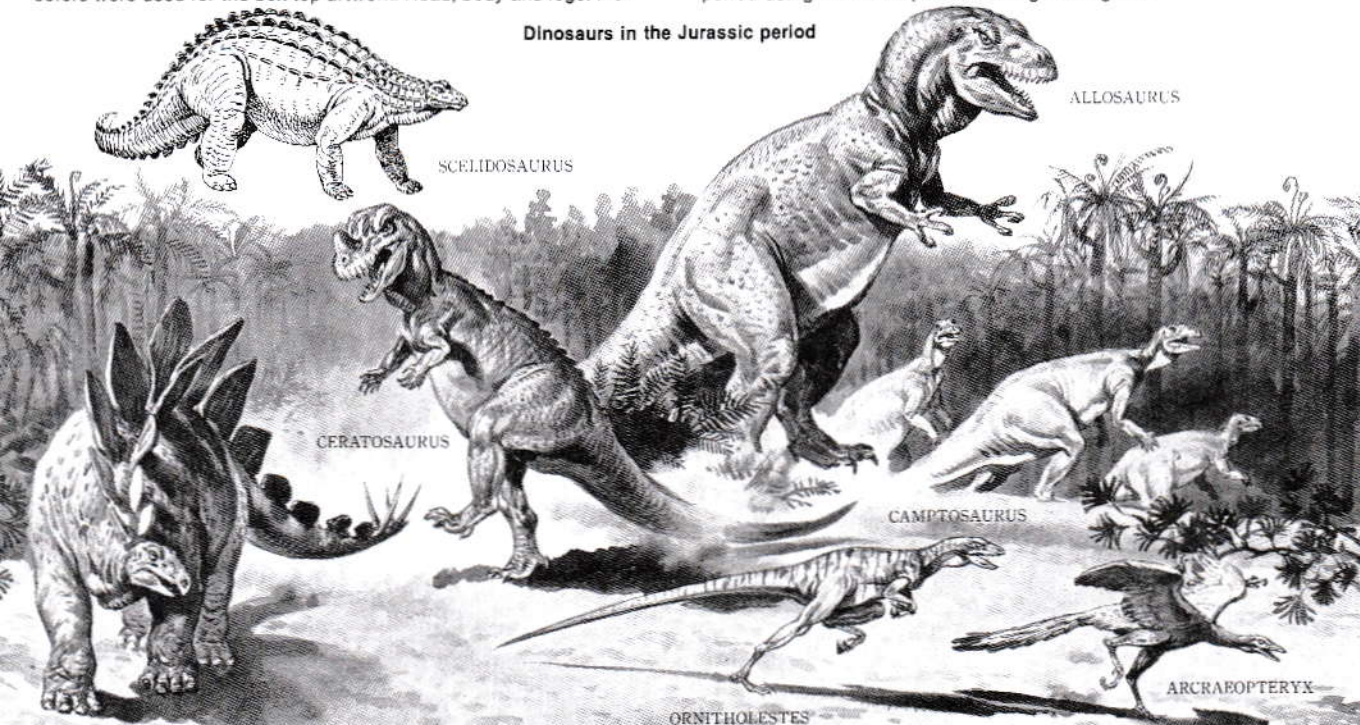
## PAINTING AND DIORAMA BUILDING

The true coloration of dinosaurs is, of course, yet unknown; however, living reptiles of this day and age are probably a good example of what color the Jurassic age reptiles were. Use the box top, or other color references, as guides for your painting. The following colors were used for the box top artwork: Head, body and legs: Flat

Green (XF-5); J.N. Green (XF-11); and Dark Green (XF-61). Belly: Deck Tan (XF-55); Bony plates: Khaki (XF-49) and Olive Green (XF-62). Spikes: Flat White (XF-2).

It would also be enjoyable to make up a diorama of the Jurassic period using the box top and drawings as a guide.

## Dinosaurs in the Jurassic period



SCOLIDOSAURUS

ALLOSAURUS

CERATOSAURUS

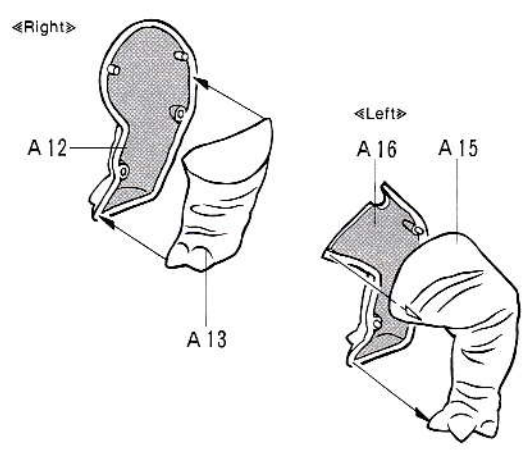
CAMPTOSAURUS

ORNITHOLESTES

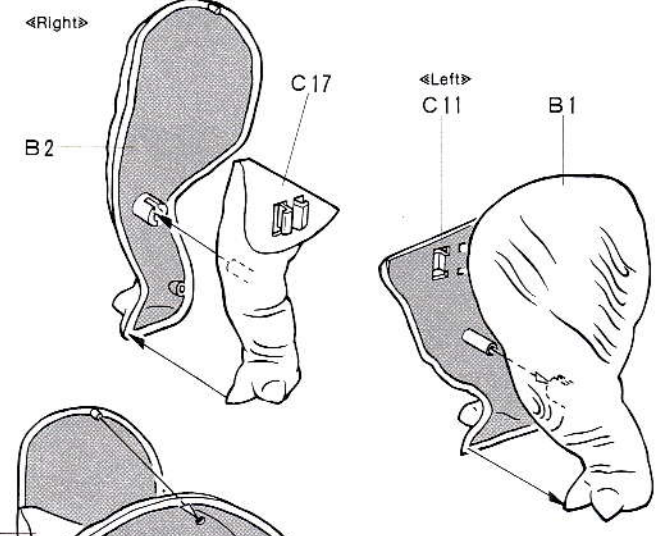
ARCAEOPTERYX



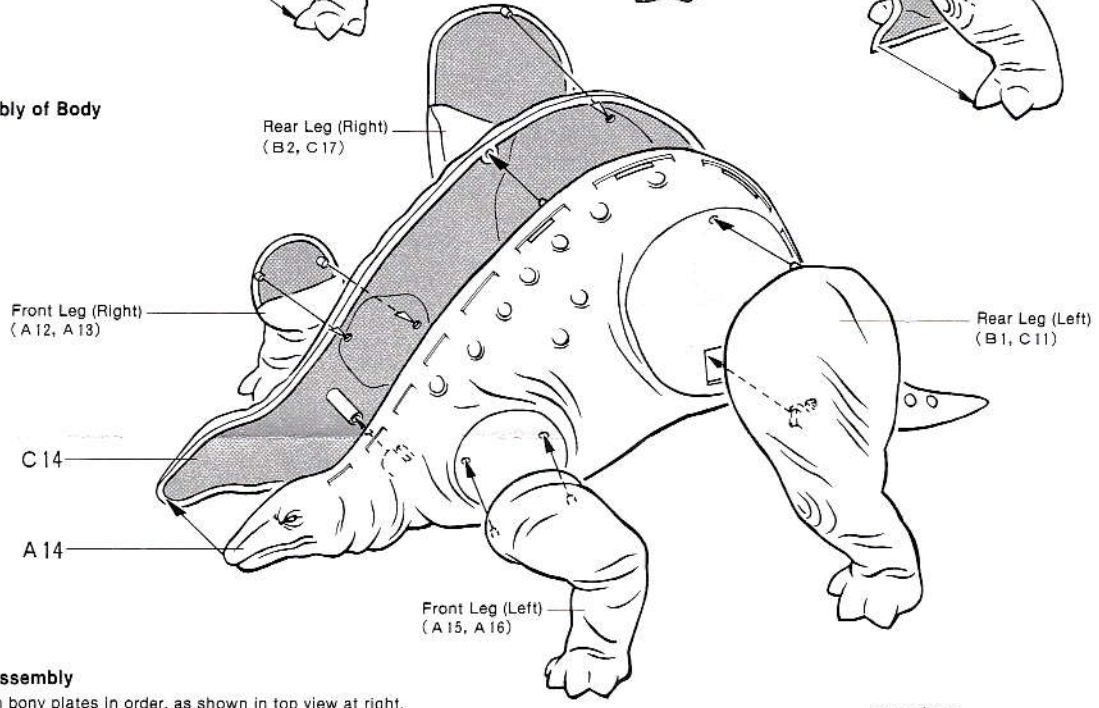
# 1 Assembly of Front Legs



# 2 Assembly of Rear Legs



# 3 Assembly of Body



# 4 Final Assembly

★ Attach bony plates in order, as shown in top view at right.

